



starrag   **bumotec**

*Programme des porte-outils
Werkzeughalterprogramm
Tool holders program*

RBC  **BEARINGS**
SCHAUBLIN **SWISS** **TOOLS**

CONTENU

INHALT

CONTENT

	Page		Page
<ul style="list-style-type: none"> • Porte-pinces HSK-A40, HSK-E40, PSC40 Spannzangenfutter HSK-A40, HSK-E40, PSC40 Milling precision toolholder HSK-A40, HSK-E40, PSC40 	4	<ul style="list-style-type: none"> • Porte-outils de tournage HSK-A40, HSK-T40, PSC40 Drehwerkzeughalter HSK-A40, HSK-T40 PSC40 Turning tool holders HSK-A40, HSK-T40, PSC40 	10
<ul style="list-style-type: none"> • Ecros Spannzangenmutter Clamping nut 	4	<ul style="list-style-type: none"> • Center line porte-outils indexé pour tournage interne HSK-A40, PSC40 Center line Bohrstangenhalter und Schneideinsätze HSK-A40, PSC40 Center line boring bar holder and boring bars HSK-A40, PSC40 	11 - 13
<ul style="list-style-type: none"> • Porte-fraise Weldon HSK-A40, HSK-E40, PSC40 Flächenspannfutter Weldon HSK-A40, HSK-E40, PSC40 End mill adapter Weldon HSK-A40, HSK-E40, PSC40 	6	<ul style="list-style-type: none"> • Porte-outils axial HSK-A40, HSK-T40, PSC40 Werkzeughalter axial HSK-A40, HSK-T40, PSC40 Axial toolholders HSK-A40, HSK-T40, PSC40 	14
<ul style="list-style-type: none"> • Porte-outils de frettage HSK-A40, HSK-E40, PSC40 Schrumpffutter HSK-A40, HSK-E40, PSC40 Heat shrink chuck HSK-A40, HSK-E40, PSC40 	7	<ul style="list-style-type: none"> • Porte-outils indexé HSK-A40, HSK-T40, PSC40 Bohrstangenhalter HSK-A40, HSK-T40, PSC40 Boring bar holder HSK-A40, HSK-T40, PSC40 	14
<ul style="list-style-type: none"> • Mandrin de taraudage HSK-A40, HSK-E40, PSC40 Gewindeschneidfutter HSK-A40, HSK-E40, PSC40 Tapping Chuck HSK-A40, HSK-E40, PSC40 	8	<ul style="list-style-type: none"> • Tête à aléser Micro, barres d'alésage et accessoires Mirco Ausdrehkopf und Schneideinsätze Micro fine boring head and boring bars 	16 - 17
<ul style="list-style-type: none"> • Adaptateur de taraudage Schnellwechseleinsätze Quick-change adapters 	8	<ul style="list-style-type: none"> • Ebauches HSK-A40, HSK-T40 Rohling HSK-A40, HSK-T40 Blank HSK-A40, HSK-T40 	15
<ul style="list-style-type: none"> • Porte-fraise HSK-E40, PSC40 Fräsdorn HSK-E40, PSC40 Milling arbor HSK-E40, PSC40 	9	<ul style="list-style-type: none"> • Porte-outil de protection HSK-A40 Trennstellenverschluss HSK-A40 Blanking plug HSK-A40 	15
<ul style="list-style-type: none"> • Tasseau scie circulaire avec douille HSK-A40, HSK-E40, PSC40 Sägeblattaufnahme mit Hülse HSK-A40, HSK-E40, PSC40 Sitting saw toolholder with clamping Cyl. HSK-A40, HSK-E40, PSC40 	10	<ul style="list-style-type: none"> • Raccord d'arrosage HSK 40 Kühlmittelübergaberohr HSK 40 Coolant tube HSK 40 	15
Schaublin High precision line			
<ul style="list-style-type: none"> • Porte pince HSK-A40 Hoch precizion Spannzengenfutter HSK-A40 Collet chuck HSK-A40 	5	<ul style="list-style-type: none"> • Porte pince s128 et SK20 Spannzangenfutter s128 und SK20 Collet chuck s128 and SK20 	17
<ul style="list-style-type: none"> • Pince type Schaublin D Spannzange Typ D D type collet 	5 / 20		
<ul style="list-style-type: none"> • Ecrou pour porte-outils Spannzangenmutter Nuts for toolholder 	5		
<ul style="list-style-type: none"> • Porte pince HSK-E25 Spannzengenfutter HSK-E25 Collet chuck HSK-E25 	16		
<ul style="list-style-type: none"> • Pince Schaublin type D Spannzange Typ D D type collet 	5 / 20		
<ul style="list-style-type: none"> • Ecrou pour porte-outils Spannzangenmutter Nuts for toolholder 	16		



Schaublin / Swisstools

- SKI Porte-pince / Spannzangenfutter / collet chuck
- F35 Pince / Spannzange / collet



Schaublin / Swisstools

- HSK-A40 – HSK-E40 Porte-pince / Werkzeughalter / toolholder
- Pince F / Spannzange Typ F / F type collets



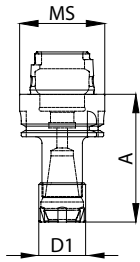
Schaublin / Swisstools

- HSK-T40 – HSK-E40 Porte-pince / Werkzeughalter / toolholders
- HSK-E32 Porte-pince / Werkzeughalter / toolholders
- Pince F / Spannzangen Typ F / F type collets



Schaublin / Swisstools

- HSK-E25 Porte-pince / Werkzeughalter / toolholders
- - Pince D / Spannzangen Typ D / D type collets



Porte-pinces

- pour pince DIN 6499 EX / ESX and ETS / ETA
- outil équilibré G 2.5/42.000 r/min

Spannzangenfutter

- für Spannzangen nach DIN 6499 EX od. ESX, sowie ETS und ETA
- Grundkörper feingewuchtet G 2.5/40.000 U/min

Collet chuck

- for collets according to DIN 6499 EX / ESX and ETS / ETA
- fine balanced base tool G 2.5/420000 r/min

Code/ Bestell-Nr./ Order number	MS	pour pince/ für Spannzange / for collet	plage de serrage/ Spannbereich / Clamping range	M	A
T-20-00054 / HA4.E18.So1.060	HSK A40	EXPE 16 / ETS 16.3	0.5–10	M20x1	60
T-20-00055 / HA4.E21.So1.060	HSK A40	EXPE 20 / ETS 20.1	0.5–13	M24x1	60
T-20-00056 / HA4.E25.So1.055	HSK A40	EXE 25 / ETS 25	0.5–16	M32x1.5	55
T-20-00062 / HE4.E18.So1.060	HSK E 40	EXPE 16 / ETS 16.3	0.5–10	M20x1	60
T-20-00067 / HE4.E21.So1.060	HSK E 40	EXPE 20 / ETS 20.1	0.5–13	M24x1	60
T-20-00063 / HE4.E25.So1.055	HSK E 40	EXE 25 / ETS 25	0.5–16	M32x1.5	55
PS4.E18.So1.060	PSC 40	EXPE 16 / ETS 16.3	0.5–10	M20x1	60
PS4.E21.So1.060	PSC 40	EXPE 20 / ETS 20.1	0.5–13	M24x1	60
PS4.E25.So1.055	PSC 40	EXE 25 / ETS 25	0.5–16	M32x1.5	55

Ecrous

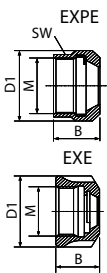
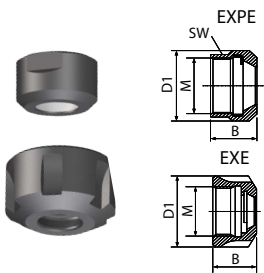
- équilibrés

Spannzangenmutter

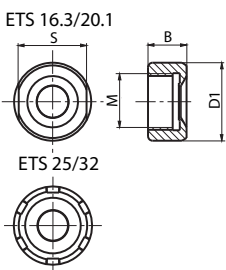
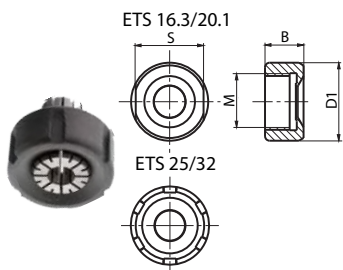
- gewuchtet

Clamping nut

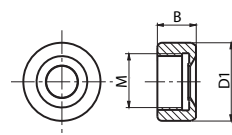
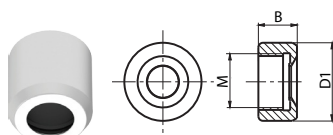
- balanced



Code/ Bestell-Nr./ Order number	Typ / Type	pour pince/ für Spannzange / for collet	D1	M	L1
E18.ER1.001.018	EXPE 16	EX/ESX	25	M20x1	18
E21.ER1.001.019	EXPE 20	EX/ESX	30.5	M24x1	18.5
T-54-00035 / E25.ER1.001.021	EXE 25	EX/ESX	42	M32x1.5	20.5



Code/ Bestell-Nr./ Order number	Typ / Type	pour pince/ für Spannzange / for collet	D1	M	B
T-54-00007 / E18.ER1.001.015	ETS 16.3	ETS/ETA	26.7	M20x1	15
T-54-00008 / E21.ER1.001.017	ETS 20.1	ETS/ETA	32	M24x1	16.5
T-54-00009 / E25.ER1.001.019	ETS 25	ETS/ETA	42	M32x1.5	18.5



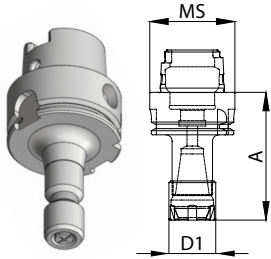
Code/ Bestell-Nr./ Order number	Typ / Type	pour pince/ für Spannzange / for collet	D1	M	B
T-54-00036 / E18.ER1.002.015	ETS 16.3	ETS/ETA	24.0	M20x1	15



Code/ Bestell-Nr./ Order number	Ø
T-51-00012 / Ro24	24

**Porte-pinces
High precision line**

- pour pinces type D
- outil équilibré G 2.5/40.000 r/min



**Spannzangenfutter
High precision line**

- für Spannzangen typ D
- Grundkörper feingewuchtet G 2.5/40.000 U/min

**Collet chuck
High precision line**

- for D type collets
- fine balanced base tool G 2.5/40.000 r/min

Code/ Bestell-Nr./ Order number	HSK	Ø écrou/ Ø Spannmutter / Ø nut	pour pinces/ für Spannzangen/ for collet	plage de serrage/ Spannbe- reich / Clam- ping range	A
87-40155	A 40	14	D8	0.5 - 5.0	60
87-40156	A 40	14	D8	0.5 - 5.0	75
87-40158	A 40	14	D8	0.5 - 5.0	90
87-40154	A 40	14 / 16	D10	0.5 - 6.0	60
87-40159	A 40	14 / 16	D10	0.5 - 6.0	75
87-40160	A 40	14 / 16	D10	0.5 - 6.0	90
87-40153	A 40	25.3	D16	0.5 - 10.0	60
87-40161	A 40	25.3	D16	0.5 - 10.0	75
87-40162	A 40	30.3	D20	0.5 - 12.7	60

Ecrous

- équilibrés

Spannzangenmutter

- gewuchtet

Clamping nut

- balanced

Code/ Bestell-Nr./ Order number	Typ / Type	pour pince/ für Spannzange / for collet	D	M
68-8706	DL8	D8	14	M10X0.75
68-10706	DL10	D10	14	M12X0.75
68-10708	DL10	D10	16	M12X0.75
68-16706	DL16	D16	25.3	M20X1
68-20XXX	DL20	D20	30.3	M24X1

Pinces

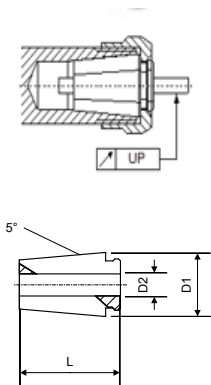
- Qualité UP

Spannzangen

- Qualität UP

Collets

- UP Quality



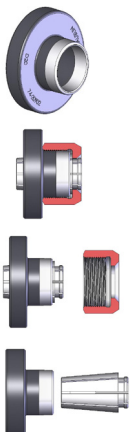
Code/ Bestell-Nr./ Order number	Typ / Type	D2	D1	L1
74-8000	D8	0.5 - 5.0	8.13	16.5
74-10000	D10	0.5 - 6.0	10.14	20
74-16000	D16	0.5 - 10.0	16.65	28.5
74-20000	D20	0.5 - 12.7	20.18	32

Extracteur

Zangenaustreiber

Extractor

Code/ Bestell-Nr./ Order number	Typ / Type
74-8902	D8
74-10902	D10
74-16902	D16
74-20902	D20



**Porte-fraises
Weldon**

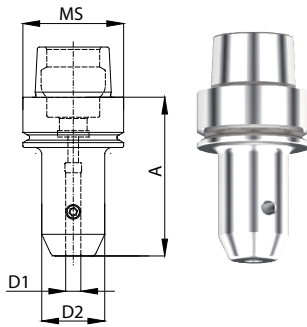
- DIN 1835 B
- outil équilibré G 2.5/25000 r/min

**Flächenspannfutter
Weldon**

- DIN 1835 B
- Aufnahme feingewuchtet
G 2.5/25 000 U/min

**End mill adapter
Weldon**

- DIN 1835 B
- fine balanced toolholders
G 2.5/25 000 r/min



Code / Bestell-Nr. / Order number	MS	D1	D2	A
T-20-00023 / HA4.W06.K01.060	HSK A40	6	25	60
T-20-00059 / HA4.W08.K01.060	HSK A40	8	28	60
T-20-00060 / HA4.W10.K01.060	HSK A40	10	35	60
T-20-00030 / HA4.W12.K01.070	HSK A40	12	42	70
T-20-00032 / HA4.W14.K01.075	HSK A40	14	45	75
T-20-00031 / HA4.W16.K01.075	HSK A40	16	48	75
T-20-00061 / HA4.W20.K01.075	HSK A40	20	52	75
T-20-00076 / HE4.W06.K01.060	HSK E 40	6	25	60
T-20-00079 / HE4.W08.K01.060	HSK E 40	8	28	60
T-20-00044 / HE4.W10.K01.060	HSK E 40	10	35	60
T-20-00074 / HE4.W12.K01.070	HSK E 40	12	42	70
T-20-00107 / HE4.W14.K01.075	HSK E 40	14	45	75
T-20-00108 / HE4.W16.K01.075	HSK E 40	16	48	75
PS4.W06.K01.050	PSC 40	6	25	50
PS4.W08.K01.050	PSC 40	8	28	50
PS4.W10.K01.051	PSC 40	10	35	51
PS4.W12.K01.056	PSC 40	12	42	56
PS4.W14.K01.055	PSC 40	14	45	55
PS4.W16.K01.055	PSC 40	16	48	55

Porte-outils de frettage

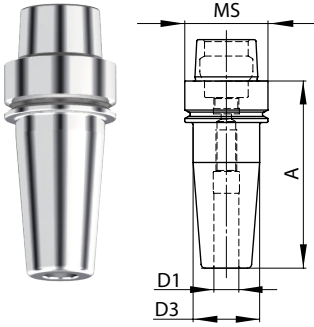
Schrumpffutter

Heat shrink chuck

- Concentricité 3 µm
- outil équilibré G 2.5/40000 r/min

- Rundlaufgenauigkeit 3 µm
- Aufnahmen feingewuchtet G 2.5/40000 U/min

- true running 3 µm
- fine balanced toolholders G 2.5/40000 r/min



Code/ Bestell-Nr./ Order number	MS	D1	D2	A
HA4.S03.K01.060	HSK A40	3	16	60
HA4.S04.K01.080	HSK A40	4	16	80
HA4.S04.K01.080	HSK A40	5	16	80
T-20-00114 / HA4.S06.K01.080	HSK A40	6	27	80
T-20-00086 / HA4.S08.K01.080	HSK A40	8	27	80
T-20-00115 / HA4.S10.K01.080	HSK A40	10	32	80
T-20-00116 / HA4.S12.K01.090	HSK A40	12	32	90
T-20-00117 / HA4.S14.K01.090	HSK A40	14	34	90
T-20-00118 / HA4.S16.K01.090	HSK A40	16	34	90
HE4.S03.K01.060	HSK E 40	3	16	60
HE4.S04.K01.070	HSK E 40	4	16	70
HE4.S05.K01.070	HSK E 40	5	16	70
T-20-00109 / HE4.S06.K01.080	HSK E 40	6	27	80
T-20-00085 / HE4.S08.K01.080	HSK E 40	8	27	80
T-20-00110 / HE4.S10.K01.080	HSK E 40	10	32	80
T-20-00111 / HE4.S12.K01.090	HSK E 40	12	32	90
T-20-00112 / HE4.S14.K01.090	HSK E 40	14	34	90
T-20-00113 / HE4.S16.K01.090	HSK E 40	16	34	90
PS4.S03.K01.060	PSC 40	3	16	60
PS4.S04.K01.060	PSC 40	4	16	60
PS4.S05.K01.060	PSC 40	5	16	60
PS4.S06.K01.075	PSC 40	6	27	75
PS4.S08.K01.075	PSC 40	8	27	75
PS4.S10.K01.075	PSC 40	10	31	75
PS4.S12.K01.075	PSC 40	12	31	75
PS4.S14.K01.080	PSC 40	14	34	80
PS4.S16.K01.080	PSC 40	16	34	80

Mandrin de taraudage

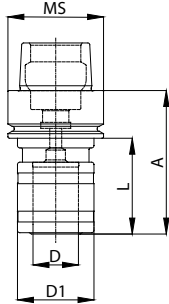
- pour les inserts à changement rapide «Système Bilz»
- sans compensation de longueur pour les machines à filetage synchronisé
- avec refroidissement interne

Gewindeschneidfutter

- für Schnellwechseleinsätze «System Bilz»
- ohne Längenausgleich für Maschinen mit synchronisiertem Gewindeschneiden
- mit Innenkühlung

Tapping chuck

- for quick change adapter «System Bilz»
- without length-compensation for machines with synchronized tapping
- with inner coolant supply

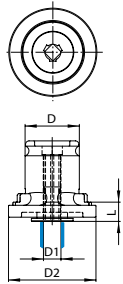
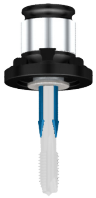


Code/ Bestell-Nr. / Order number	MS	M	D	D1	D2	A	L
HA4.Go1.K01.060	HSK E 40	M3-M14	19	32	32	60	40
HA4.Go2.K01.100	HSK E 40	M6-M24	31	50	50	100	80
	HSK E 40						
HE4.Go1.K01.060	HSK E 40	M3-M14	19	32	32	60	40
HE4.Go2.K01.100	HSK E 40	M6-M24	31	50	50	100	80
PS4.Go1.K01.060	PSC 40	M3-M14	19	32	32	60	40

Adaptateur de taraudage

Schnellwechseleinsätze

Quick-change adapters



Code/ Bestell-Nr. / Order number	D	D1 Ø / □	D2	L
Go1.U03.K31.007	19	3.5 / 2.7	32	7
Go1.U04.K31.007	19	4.0 / 3.0	32	7
Go1.U05.K31.007	19	4.5 / 3.4	32	7
Go1.U06.K31.007	19	6.0 / 4.9	32	7
Go1.U07.K31.007	19	7.0 / 5.5	32	7
Go1.U08.K31.007	19	8.0 / 6.2	32	7
Go1.U09.K31.007	19	9.0 / 7.0	32	7
Go1.U10.K31.007	19	10.0 / 8.0	32	7
Go1.U11.K31.007	19	11.0 / 9.0	32	7
Go2.U06.K31.011	31	6.0 / 4.9	50	11
Go2.U07.K31.011	31	7.0 / 5.5	50	11
Go2.U08.K31.011	31	8.0 / 6.2	50	11
Go2.U09.K31.011	31	9.0 / 7.0	50	11
Go2.U10.K31.011	31	10.0 / 8.0	50	11
Go2.U11.K31.011	31	11.0 / 9.0	50	11
Go2.U12.K31.011	31	12.0 / 9.0	50	11
Go2.U14.K31.011	31	14.0 / 11.0	50	11
Go2.U16.K31.011	31	16.0 / 12.0	50	11
Go2.U18.K31.011	31	18.0 / 14.5	50	11

Porte-fraise

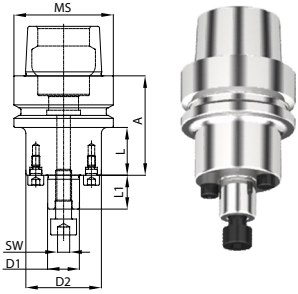
- pour maintenir des fraises avec une rainure transversale
- vissé dans la broche d'entraînement
- Les coups sont bien équilibrés
- G 2,5 / 18000 tr / min

Fräsdorn

- zur Aufnahme von Fräsern mit Quernut
- eingeschraubte Mitnehmerbolzen
- Aufnahmen feingewuchtet G 2.5/18000 U/min

Milling arbor

- to clamp milling cutters with cross drive
- screwed drive bolt
- fine balanced toolholders G 2.5/18000 r/min

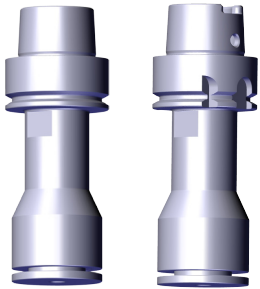


Code/ Bestell-Nr. / Order number	MS	D1	D2	SW	A	L	L1
HE4.D16.001.050	HSK E 40	16	38	6	50	30	17
HE4.D22.001.050	HSK E 40	22	48	8	50	30	19
HE4.D27.001.065	HSK E 40	27	58	10	65	45	21
PS4.D16.001.035	PSC 40	16	38	6	35		17
PS4.D22.001.040	PSC 40	22	48	8	40		19

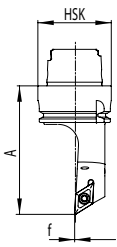
Tasseau scie circulaire avec douille

Sägeblattaufnahme mit Hülse

Sitting saw toolholder with clamping cyl.



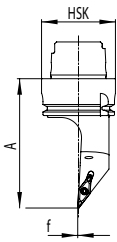
Code/ Bestell-Nr. / Order number	MS	D	A	L	SW	Remark
T-20-00321 / HA4.10S.018.070	HSK A40	10	70	50	13	inner coolant supply
T-20-00320 / HA4.13S.022.070	HSK A40	13	70	50	18	inner coolant supply
T-20-00319 / HA4.16S.026.070	HSK A40	16	70	50	18	inner coolant supply
T-20-00318 / HA4.20S.035.070	HSK A40	20	70	50	22	inner coolant supply
T-20-00316 / HA4.22S.035.082	HSK A40	22	82	62	22	inner coolant supply
T-20-00317 / HA4.22S.035.105	HSK A40	22	105	85	22	inner coolant supply
T-20-00103 / HA4.So1.035.082	HSK A40	22	82	62	22	
T-20-00219 / HA4.So1.034.105	HSK A40	22	105	85	22	
T-20-00122 / HA4.So2.035.082	HSK A40	20	82	62	22	
T-20-00104 / HE4.So1.035.082	HSK E 40	22	82	62	22	
T-20-00243 / HE4.So1.034.105	HSK E 40	22	105	85	22	
T-20-00357 / PS4.22S.035.082	PSC 40	22	82	62	22	inner coolant supply
T-20-00358 / PS4.22S.035.105	PSC 40	22	105	85	22	inner coolant supply
T-20-00197 / PS4.So2.035.070	PSC 40	20	70	50	22	



SDJC L 55°/93°



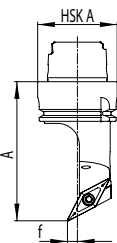
Code/ Bestell-Nr./ Order number	MS	f	A	R/L	Plaquette/ Wendeplatte/ Insert	Accessoires/ Ersatzteile/ Spareparts
T-20-00329 / HA4.KDB.LJA.070-F0	HSK A40	0	70	L	DC .. 11 T3 ..	S05
T-20-00065 / HA4.KDB.LJA.070	HSK A40	5	70	L	DC .. 11 T3 ..	S05
T-20-00245 / HT4.KDB.LJA.070	HSK T40	0	70	L	DC .. 11 T3 ..	S05
PS4.KDB.LJA.070-F0	PSC40	0	70	L	DC .. 11 T3 ..	S05
PSB.LJA.070	PSC40	5	70	L	DC .. 11 T3 ..	S05



SVJC L 35°/93°



Code/ Bestell-Nr./ Order number	MS	f	A	R/L	Plaquette/ Wendeplatte/ Insert	Accessoires/ Ersatzteile/ Spareparts
T-20-00330 / HA4.KVA.LJA.070-F0	HSK A40	0	70	L	VC .. 11 T3 ..	S10
T-20-00331 / HA4.KVE.LJA.070-F0	HSK A40	0	70	L	VB .. 11 03 ..	S10
T-20-00098 / HA4.KVA.LJA.070	HSK A40	5	70	L	VC .. 11 T3 ..	S10
T-20-00246 / HT4.KVA.LJA.070	HSK T40	0	70	L	VC .. 11 T3 ..	S10
PS4.KVA.LJA.070-F0	PSC40	0	70	L	VC .. 11 T3 ..	S10
PS4.KVE.LJA.070-F0	PSC40	0	70	L	VB .. 11 03 ..	S10

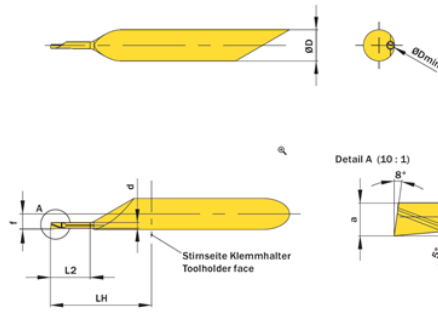


SVPC L 117.5°/35°

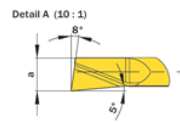


Code/ Bestell-Nr./ Order number	MS	f	A	R/L	Plaquette/ Wendeplatte/ Insert	Accessoires/ Ersatzteile/ Spareparts
HA4.KVE.LPA.070-F0	HSK A40	0	70	L	VB .. 11 03 ..	S10
T-20-00119 / HA4.KVB.LPA.070	HSK A40	5	70	L	VC .. 16 04 ..	S07
PS4.KVE.LPA.070-F0	PSC40	0	70	L	VB .. 11 03 ..	S10

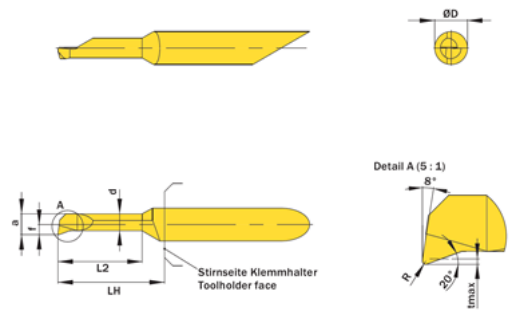
**Center Line
Barres d'alésage**



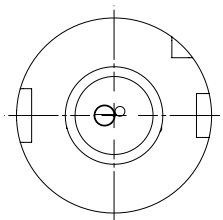
**Center Line
Schneideinsätze**



**Center Line
Boring bars**



Code/ Bestell-Nr./ Order number	ØD	L2	Ød min	R	a	d	f	LH	tmax
255.C04.003.013	4.0	1.2	0.3	-	0.25	0.19	1.95	13.0	-
255.C04.006.013	4.0	2.5	0.6	-	0.55	0.46	1.95	13.0	-
255.C04.010.013	4.0	4.0	1.0	0.05	0.95	0.65	1.95	13.0	0.1
255.C04.017.013	4.0	6.0	1.7	0.05	1.45	1.05	1.95	13.0	0.15
255.C04.022.013	4.0	6.0	2.2	0.05	2.45	2.05	1.95	13.0	0.2
255.C04.027.013	4.0	10.2	2.7	0.05	2.95	2.55	1.95	13.0	0.2
255.C04.032.013	4.0	10.2	3.2	0.05	2.95	2.55	1.95	13.0	0.2
255.C04.037.013	4.0	10.2	3.7	0.15	3.45	3.05	1.95	13.0	0.2
255.C04.042.013	4.0	10.2	4.2	0.05	3.95	3.45	1.95	13.0	0.3

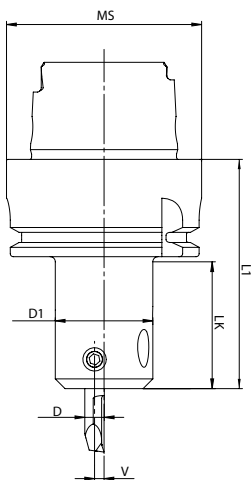


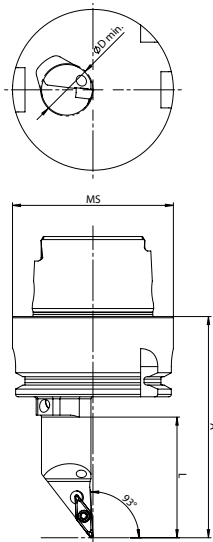
**Center Line
Porte-outils indexé**

**Center Line
Bohrstangenhalter**

**Center Line
Boring bar holder**

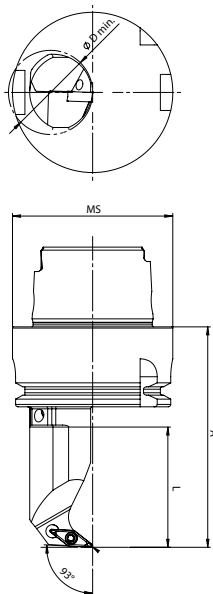
Code/ Bestell-Nr./ Order number	MS	D1	D	L1	LK	V
HA4.C04.K01.047-F0	HSK A40	20	4	47	26	1.95
PS4.C04.K01.047-F0	PSC 40	20	4	47	26	1.95





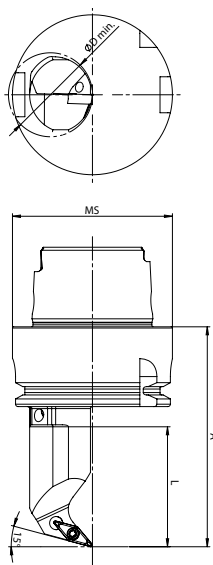
SVJC R 35°/93°

Code/ Bestell-Nr./ Order number	MS	f	A	ØDmin	L	R/L	Plaquette/ Wendeplatte/ Insert
HA4.KVI.RJA.055-F0	HSK A40	0	55	13	30	R	VC..07 02..
HA4.KVI.RJB.055-F0	HSK A40	0	55	21	30	R	VC..07 02..
PS4.KVI.RJA.050-F0	PSC 40	0	50	13	30	R	VC..07 02..
PS4.KVI.RJB.050-F0	PSC 40	0	50	22	30	R	VC..07 02..



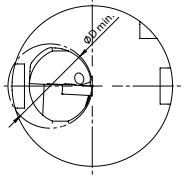
SVUC R 35°/93°

Code/ Bestell-Nr./ Order number	MS	f	A	ØDmin	L	R/L	Plaquette/ Wendeplatte/ Insert
HA4.KVI.RUB.055-F0	HSK A40	0	55	21	30	R	VC..07 02..
PS4.KVI.RUB.050-F0	PSC 40	0	50	21	30	R	VC..07 02..

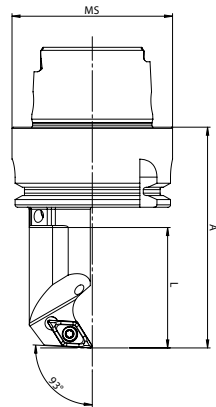


SVQC R 35°/105°

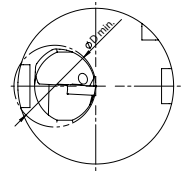
Code/ Bestell-Nr./ Order number	MS	f	A	ØDmin	L	R/L	Plaquette/ Wendeplatte/ Insert
HA4.KVI.RQB.055-F0	HSK A40	0	55	21	30	R	VC..07 02..
PS4.KVI.RQB.050-F0	PSC 40	0	50	21	30	R	VC..07 02..



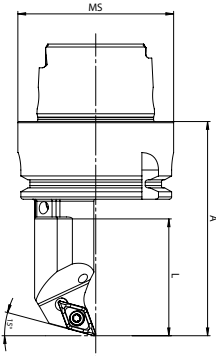
SDUC R 55°/93°



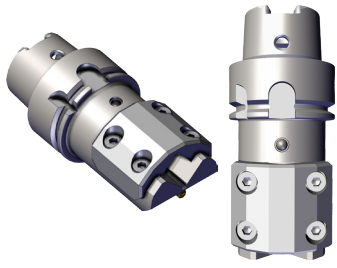
Code/ Bestell-Nr./ Order number	MS	f	A	ØDmin	L	R/L	Plaquette/ Wendeplatte/ Insert
HA4.KDA.RUB.055-F0	HSK A40	0	55	21	30	R	DC .. 07 02 ..
PS4.KDA.RUB.050-F0	PSC 40	0	50	21	30	R	DC .. 07 02 ..



SDQC R 55°/105°



Code/ Bestell-Nr./ Order number	MS	f	A	ØDmin	L	R/L	Plaquette/ Wendeplatte/ Insert
HA4.KDA.RQB.055-F0	HSK A40	0	55	21	30	R	DC .. 07 02 ..
PS4.KDA.RQB.050-F0	PSC 40	0	50	21	30	R	DC .. 07 02 ..



Porte-outils axial

Werkzeughalter axial

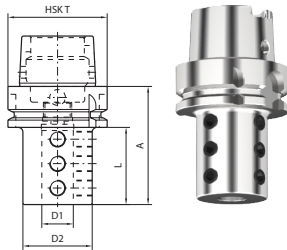
Tool holder axial

Code/ Bestell-Nr./ Order number	MS	Carré/ Vier- kant/ Square	A	L	SW
T-20-00135 / HA4.V1X.N40.070	HSK A40	10 / 12	70	50	10/12
T-20-00151 / HA4.V1X.N4T.070	HSK T40	10 / 12	60	40	10/12
T-20-00136 / PS4.V1X.N40.060	PSC40	10/12	70	50	10/12

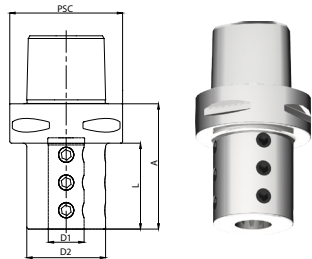
Porte-outils indexé

Bohrstangenhalter

Boring bar holder



Code/ Bestell-Nr./ Order number	MS	D1	D2	A	L
HA4.B06.K01.055-Bum	HSK A40	6	34	55	35
HA4.B08.K01.055-Bum	HSK A40	8	34	55	35
HA4.B10.K01.055-Bum	HSK A40	10	34	55	35
HA4.B12.K01.055-Bum	HSK A40	12	36	55	35
HA4.B16.K01.070-Bum	HSK A40	16	40	70	50
HA4.B20.K01.085-Bum	HSK A40	20	44	85	65
HA4.B06.K01.055	HSK T40	6	34	55	35
HA4.B08.K01.055	HSK T40	8	34	55	35
HA4.B10.K01.055	HSK T40	10	34	55	35
HA4.B12.K01.055	HSK T40	12	36	55	35
HA4.B16.K01.070	HSK T40	16	40	70	50
HA4.B20.K01.085	HSK T40	20	44	85	65
PS4.B06.K01.065	PSC40	6	34	65	43
PS4.B08.K01.065	PSC40	8	34	65	43
PS4.B10.K01.065	PSC40	10	34	65	43
PS4.B12.K01.065	PSC40	12	36	65	43
PS4.B16.K01.065	PSC40	16	40	65	43
PS4.B20.K01.065	PSC40	20	44	65	-
PS4.B25.K01.065	PSC40	25	44	65	-



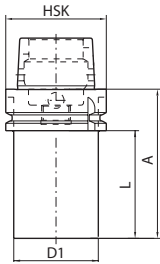
Ebauches**Rohling****Blank**

• trempé 48HRC / 0.8mm profond

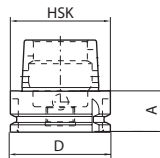
• einsatzgehärtet 48HRC / 0.8mm tief

• case-hardened 48HRC depth 0.8

Code/ Bestell-Nr./ Order number	HSK A	D1	A	L
T-20-00064 / HA4.Ro4.001.100	A 40	33	100	80



Code/ Bestell-Nr./ Order number	HSK T	D1	A	L
HA4.Ro4.001.055	T 40	54	55	35
HA4.Ro4.002.065	T 40	64	65	45
HA4.Ro5.001.080	T 40	33	80	60
T-20-00127 / HA4.Ro4.002.100	T 40	33	100	80

Porte outil de protection**Trennstellenverschluss****Blanking plug**

Code/ Bestell-Nr./ Order number	HSK A	D	A
HA4.000.001.020	A 40	40	20

**Raccord d'arrosage
HSK 40****Kühlmittelübergaberohr
HSK 40****Coolant tube
HSK 40**

Code/ Bestell-Nr./ Order number
T-23-00004 / HA4.ER4.001.030

Clé Raccord d'arrosage**Schlüssel Kühlmitelrohr****Wrench coolant tube**

Code/ Bestell-Nr./ Order number	Typ / Type
HA4.ER4.002.115	HSK 40

**Porte-pinces
High precision line**

**Spannzangenfutter
High precision line**

**Collet chuck
High precision line**

- pour pinces type D
- outil équilibré G 2.5/40.000 r/min

- für Spannzangen typ D
- Grundkörper feingewuchtet G 2.5/40.000 U/min

- for D type collets
- fine balanced base tool G 2.5/40.000 r/min



Code/ Bestell-Nr./ Order number	HSK	Ø écrou/ Ø Spannmutter / Ø nut	pour pinces/ für Spannzangen/ for collet	plage de serrage/ Spannbe- reich / Clam- ping range	A
87-25016	E 25	14.	D8	0.5 - 5.0 mm	33
87-25017	E 25	20	D12	0.5 - 7.0 mm	38.5
87-25018	E 25	25	D16	0.5 - 10.0 mm	55.5

Ecrous

Spannzangenmutter

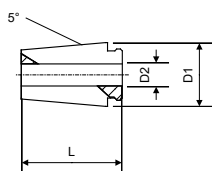
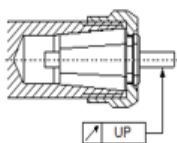
Clamping nut

- équilibrés

- gewuchtet

- balanced

Code/ Bestell-Nr./ Order number	Typ / Type	pour pince/ für Spannzange / for collet	D	M
68-8705	DL8	D8	14.	M10X0.75
68-10706	DL12	D12	20	M12X0.75
68-16704	DL16	D16	25	M12X0.75



Pinces

Spannzangen

Collets

- Qualité UP

- Qualität UP

- UP Quality

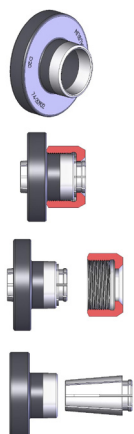
Code/ Bestell-Nr./ Order number	Typ / Type	D2	D1	L1
74-8000	D8	0.5 - 5.0	8.13	16.5
74-12000	D12	0.5 - 7.0	12.65	24
74-16000	D16	0.5 - 10.0	16.65	28.5

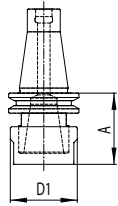
Extracteur

Zangenaustreiber

Extractor

Code/ Bestell-Nr./ Order number	Typ / Type
74-8902	D8
74-12902	D12
74-16902	D16





Porte-pinces S-128

- pour pincés DIN 6499 EX / ESX and ETS / ETA
- outil équilibré G 2.5/50.000 r/min

Spannzangenfutter S-128

- für Spannzangen nach DIN 6499 EX od. ESX, sowie ETS und ETA
- Grundkörper feingewuchtet G 2.5/50.000 U/min

Collet chuck S-128

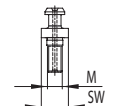
- for collets according to DIN 6499 EX / ESX and ETS / ETA
- fine balanced base tool G 2.5/50.000 r/min

Code/ Bestell-Nr./ Order number	SKI	pour pince/ für Spannzange / for collet	plage de serrage/ Spannbereich / clamping range	M	A
T-20-00072 / SK2.E18.002.024	20	EXPE 16 / ETS 16.3	0.5–10	M20x1	24

Tirant

Anzugsbolzen

Pull stud



Code/ Bestell-Nr./ Order number	M	SW
T-55-00004 / SK2.ER1.001.026	6	11

Porte-pinces SK20

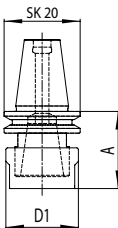
- pour pincés DIN 6499 EX / ESX and ETS / ETA
- outil équilibré G 2.5/50.000 r/min

Spannzangenfutter SK20

- für Spannzangen nach DIN 6499 EX od. ESX, sowie ETS und ETA
- Grundkörper feingewuchtet G 2.5/50.000 U/min

Collet chuck SK20

- for collets according to DIN 6499 EX / ESX and ETS / ETA
- fine balanced base tool G 2.5/50.000 r/min

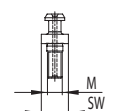


Code/ Bestell-Nr./ Order number	SK	pour pince/ für Spannzange / for collet	plage de serrage/ Spannbereich / clamping range	M	A
T-20-00100 / SK2.E18.001.024	20	EXPE 16 / ETS 16.3	0.5–10	M20x1	24
T-20-00101 / SK2.E21.001.030	20	EXPE 20 / ETS 20.1	0.5–13	M24x1	30

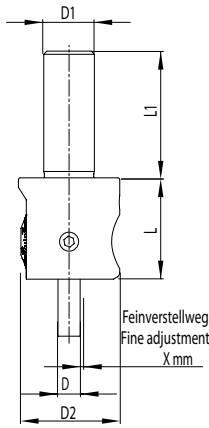
Tirant

Anzugsbolzen

Pull stud



Code/ Bestell-Nr./ Order number	M	SW
T-55-00013 / SK2.ER2.001.026	8	10



**Tête à aléser
Ø 0.3-19.1**

- Ajustement du diamètre avec un jeu minimum
- Précision de livraison de 0.002mm sur vernier de diamètre
- avec refroidissement interne

**Micro Ausdrehkopf
Ø 0.3-19.1**

- DurchmesserEinstellung mit geringstem Umkehrspiel
- Zustellgenauigkeit von 0.002mm über Nonius im Durchmesser
- mit Innenkühlung

**Micro fine boring head
Ø 0.3-19.1**

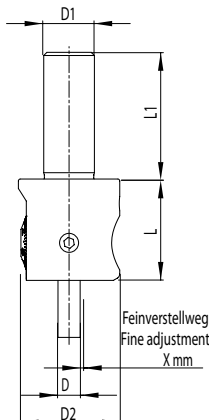
- diametrical adjustment with maximal reduced reversal backlash
- 0.002mm diametrical adjustment by nonius
- with inner coolant supply

Code/ Bestell-Nr. / Order number	D	D1	D2	X	L	L1
<i>ANALOG</i>						
SHX.A25.K01.025	4	8	25	1.5	25	20
SH1.A25.K01.025	4	10	25	1.5	25	25
SH1.A32.K01.032	7	10	32	2.5	32	40
SH2.A32.K01.032	7	16	32	2.5	32	40

**Tête à aléser
DIGITAL Ø 0.3-19.1**

**Micro Ausdrehkopf
DIGITAL Ø 0.3-19.1**

**Micro fine boring head
DIGITAL Ø 0.3-19.1**



- Réglage de la précision 0,001 mm diamètre
- système de mesure de position directe (non pas de jeu)
- pas de batterie et sélecteur d'évaluation installé dans l'outil
- opération très facile
- utilisation numérique et analogique

- Einstellgenauigkeit 0.001mm im Durchmesser
- direktes Wegmeßsystem (kein Umkehrspiel)
- keine Batterie und Auswerteelektronik im Werkzeug verbaut
- sehr einfache Bedienung
- digital und analog einsetzbar

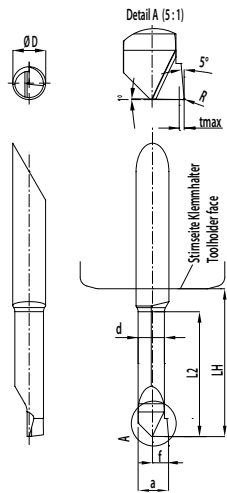
- 0.001 accuracy in diameter
- direct measurement system (no backlash)
- no battery and electronic evaluation unit inside the tool
- very easy operation
- for digital and analog use

Code/ Bestell-Nr. / Order number	D	D1	D2	X	L	L1
<i>DIGITAL</i>						
SH1.A25.DA2.025	4	10	25	1.5	25	25
SH2.A32.DA2.032	7	16	32	2.5	32	40

- L'unité d'affichage doit être commandée séparément (GH1.DA2.BG0.077).

- Anzeigeeinheit muss separat bestellt werden (GH1.DA2.BG0.077).

- Display unit must be ordered separately (GH1.DA2.BG0.077).



Barres d'alésage

Schneideinsätze

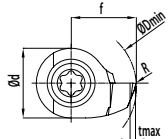
Boring bars

Code/ Bestell-Nr./ Order number	ØD	L2	Ød min	Ød max	R	a	d	f	LH	t max
255.004.003.013	4.0	1.2	0.3	0.7	-	0.25	0.15	0.15	11.0	0.03
255.004.006.013	4.0	2.5	0.6	1.1	-	0.55	0.46	0.30	11.0	0.05
255.004.010.013	4.0	4.0	1.0	2.3	0.05	0.95	0.65	0.50	11.0	0.1
255.004.022.013	4.0	6.0	2.2	3.3	0.05	2.00	1.55	1.10	11.0	0.2
255.004.032.013	4.0	10.2	3.2	4.3	0.05	3.00	2.55	1.60	11.0	0.2
255.004.039.018	4.0	15.2	3.9	(7.1)	0.05	3.70	3.45	1.95	16.0	0.3
255.007.052.023	7.0	20.3	5.2	6.3	0.05	5.00	4.25	2.60	21.0	0.5
255.007.062.023	7.0	20.3	6.2	7.3	0.05	6.00	5.25	3.10	21.0	0.5
255.007.069.028	7.0	25.4	6.9	12.1	0.20	6.70	6.25	3.45	26.0	0.5

Inserts

Schneidplatten

Inserts

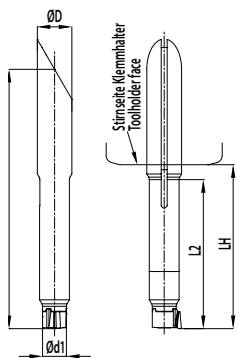


Code/ Bestell-Nr./ Order number	Ød min	Ød max	R	f	Ød	tmax	Code
283.007.069.004	6.9	8.1	0.2	3.45	4.8	1.0	D07
283.007.079.004	7.9	9.1	0.2	3.95	4.8	1.0	D07
283.007.089.004	8.9	10.1	0.2	4.45	4.8	1.0	D07
283.010.099.004	9.9	12.1	0.2	4.95	7	1.0	D10
283.010.119.004	11.9	14.1	0.2	5.95	7	1.0	D10
283.010.139.004	13.9	19.1	0.2	6.95	7	1.0	D10

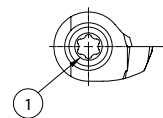
Adapter pour les inserts

Adapter für Schneidplatten

Adapter for inserts



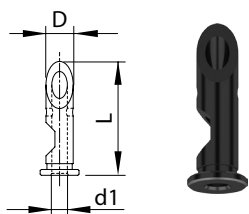
Code/ Bestell-Nr./ Order number	ØD h6	L2	Ø d1	L1	LH	Schraube/ screw	①	Torx	Code
282.007.007.033	7.0	30	4.8	56	31	M2x7.5 (900.254.020.007)		T7	D07
282.007.010.038	7.0	35	7.0	61	36	M3x9.0 (900.254.030.009)		T9	D10



Réductions

Reduktionshülsen

Reduction sleeves



Code/ Bestell-Nr./ Order number	D	d1	L
224.007.004.030	7	4	(30)

Pinces

Spannzangen

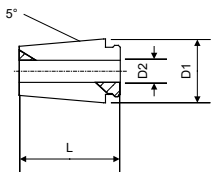
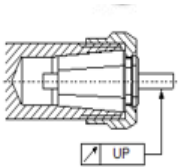
Collets

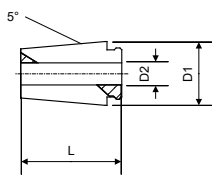
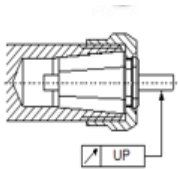
• Qualité UP

• Qualität UP

• UP Quality

Code/ Bestell-Nr./ Order number	Typ / Type	D
74-08000D00.5U	Pince D8 UP	d0.5
74-08000D01.0U	Pince D8 UP	d1
74-08000D01.5U	Pince D8 UP	d1.5
74-08000D02.0U	Pince D8 UP	d2
74-08000D02.5U	Pince D8 UP	d2.5
74-08000D03.0U	Pince D8 UP	d3
74-08000D03.17U	Pince D8 UP	d3.17 (1/8")
74-08000D03.5U	Pince D8 UP	d3.5
74-08000D04.0U	Pince D8 UP	d4
74-08000D04.5U	Pince D8 UP	d4.5
74-08000D05.0U	Pince D8 UP	d5
74-10000D00.5U	Pince D10 UP	d0.5
74-10000D01.0U	Pince D10 UP	d1
74-10000D01.5U	Pince D10 UP	d1.5
74-10000D02.0U	Pince D10 UP	d2
74-10000D02.5U	Pince D10 UP	d2.5
74-10000D03.0U	Pince D10 UP	d3
74-10000D03.17U	Pince D10 UP	d3.17 (1/8")
74-10000D03.5U	Pince D10 UP	d3.5
74-10000D04.0U	Pince D10 UP	d4
74-10000D04.5U	Pince D10 UP	d4.5
74-10000D05.0U	Pince D10 UP	d5
74-10000D05.5U	Pince D10 UP	d5.5
74-10000D06.0U	Pince D10 UP	d6
74-12000D01.0U	Pince D12 UP	d1
74-12000D01.5U	Pince D12 UP	d1.5
74-12000D02.0U	Pince D12 UP	d2
74-12000D02.5U	Pince D12 UP	d2.5
74-12000D03.0U	Pince D12 UP	d3
74-12000D03.17U	Pince D12 UP	d3.17 (1/8")
74-12000D03.5U	Pince D12 UP	d3.5
74-12000D04.0U	Pince D12 UP	d4
74-12000D04.5U	Pince D12 UP	d4.5
74-12000D05.0U	Pince D12 UP	d5
74-12000D05.5U	Pince D12 UP	d5.5
74-12000D06.0U	Pince D12 UP	d6
74-12000D06.35U	Pince D12 UP	d6.35 (1/4")
74-12000D07.0U	Pince D12 UP	d7
74-14000D00.5U	Pince D14 UP	d0.5
74-14000D01.0U	Pince D14 UP	d1
74-14000D01.5U	Pince D14 UP	d1.5
74-14000D02.0U	Pince D14 UP	d2
74-14000D02.5U	Pince D14 UP	d2.5
74-14000D03.0U	Pince D14 UP	d3
74-14000D03.17U	Pince D14 UP	d3.17 (1/8")
74-14000D03.5U	Pince D14 UP	d3.5
74-14000D04.0U	Pince D14 UP	d4
74-14000D04.5U	Pince D14 UP	d4.5
74-14000D05.0U	Pince D14 UP	d5
74-14000D05.5U	Pince D14 UP	d5.5
74-14000D06.0U	Pince D14 UP	d6
74-14000D06.35U	Pince D14 UP	d6.35 (1/4")
74-14000D06.5U	Pince D14 UP	d6.5
74-14000D07.0U	Pince D14 UP	d7
74-14000D08.0U	Pince D14 UP	d8
74-14000D09.0U	Pince D14 UP	d9





Code/ Bestell-Nr./ Order number	Typ / Type	D
74-16000D00.5U	Pince D16 UP	d0.5
74-16000D01.0U	Pince D16 UP	d1
74-16000D01.5U	Pince D16 UP	d1.5
74-16000D02.0U	Pince D16 UP	d2
74-16000D02.5U	Pince D16 UP	d2.5
74-16000D03.0U	Pince D16 UP	d3
74-16000D03.17U	Pince D16 UP	d3.17 (1/8")
74-16000D03.5U	Pince D16 UP	d3.5
74-16000D04.0U	Pince D16 UP	d4
74-16000D04.5U	Pince D16 UP	d4.5
74-16000D05.0U	Pince D16 UP	d5
74-16000D05.5U	Pince D16 UP	d5.5
74-16000D06.0U	Pince D16 UP	d6
74-16000D06.35U	Pince D16 UP	d6.35 (1/4")
74-16000D06.5U	Pince D16 UP	d6.5
74-16000D07.0U	Pince D16 UP	d7
74-16000D07.5U	Pince D16 UP	d7.5
74-16000D08.0U	Pince D16 UP	d8
74-16000D08.5U	Pince D16 UP	d8.5
74-16000D09.0U	Pince D16 UP	d9
74-16000D09.5U	Pince D16 UP	d9.5
74-16000D09.52U	Pince D16 UP	d9.52 (3/8")
74-16000D10.0U	Pince D16 UP	d10

RBC[®]
BEARINGS **SCHAUBLIN**

Schaublin SA
Rue de la Blancherie 9
CH-2800 Delémont
Phone +41 32 421 13 00
Fax +41 32 421 13 02
www.schaublin.ch

SWISS  **TOOLS**[®]

Swiss Tool Systems AG
Wydenstrasse 28
CH-8575 Bürglen
Phone +41 71 634 85 20
Fax +41 71 634 85 29
www.swisstools.org