

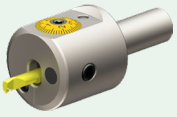


S w i s s

**MICRO
MACHINING**

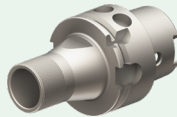
SCHAUBLIN SWISS+TOOLS®

ROTATING TOOLHOLDERS



Micro Ausdrehkopf
Micro fine boring head
Tête à alésér

Seite/page 4



EX Spannanzangenfutter
EX collet chuck
Porte-pince EX

Seite/page 6



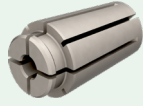
ESX / EX Spannanzange
ESX / EX collet
Pince ESX / EX

Seite/page 7



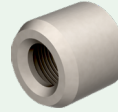
D Spannanzangenfutter
D collet chuck
Porte-pince D

Seite/page 9



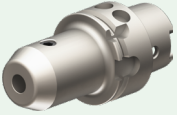
D Spannanzangenmutter
D clamping nut
Ecrou D

Seite/page 10



D Spannanzangenmutter
D clamping nut
Ecrou D

Seite/page 10



Flächenspannfutter Weldon
End mill adapter Weldon
Porte-fraise Weldon

Seite/page 12



Schrumfutter
Heat shrink chuck
Porte-outil de frettage

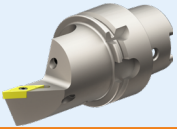
Seite/page 13



Gewindeschneidfutter
Tapping chuck
Mandrin de taraudage

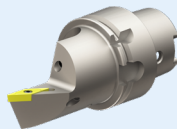
Seite/page 14

STATIONARY TOOLHOLDERS



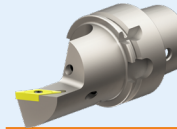
SDJC R/L 55°/93°

Seite/page 16



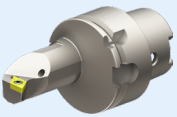
SVJ C/B R/L 35°/93°

Seite/page 16



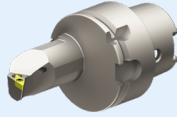
SVP C/B R/L 117.5°/35°

Seite/page 17



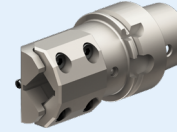
SDUC R/L 55°/93°

Seite/page 18



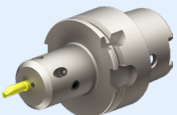
SDQC R/L 55°/93°

Seite/page 19



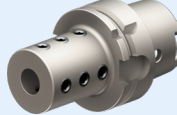
Werkzeughalter axial
Axial toolholder
Porte-outil axial

Seite/page 19



Center Line Bohrstangenhalter
Center Line boring bar holder
Centre Line porte-outil indexé

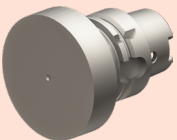
Seite/page 26



Bohrstangenhalter
Boring bar holder
Porte-outil indexé

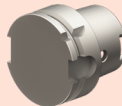
Seite/page 27

ACCESSORIES



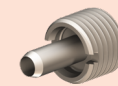
Rohling
Blank
Ebauche

Seite/page 28



Trennstellenverschluss
Blanking plug
Bouchon d'ébauche

Seite/page 28



Kühlmittelübergaberohr HSK40
Coolant tube HSK 40
Raccord d'arrosage HSK 40

Seite/page 29



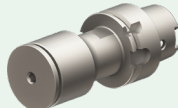
EX Spannangemutter
EX clamping nut
Ecrou EX

Seite/page 8



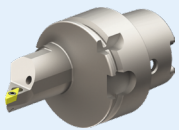
Fräsdorn
Milling arbor
Porte-fraise

Seite/page 15



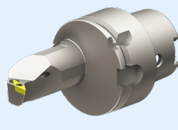
Sägeblattaufnahme mit Hülse
Sitting saw toolholder with clamping cyl.
Tasseau scie circulaire avec douille

Seite/page 15



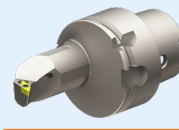
SVJC R/L 35°/93°

Seite/page 17



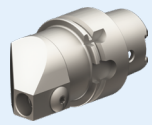
SVUC R/L 35°/93°

Seite/page 18



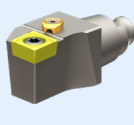
SVQC R/L 35°/105°

Seite/page 18



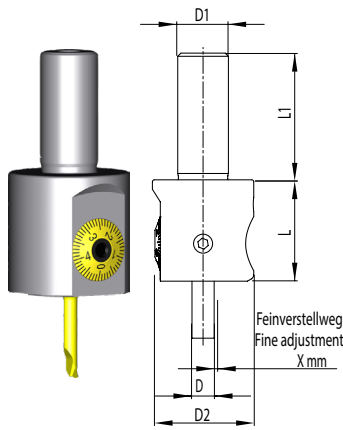
Schnellwechselsystem /
Quick-change system /
Changement rapide

Seite/page 20



Schnellwechselkopf /
Quick-change head /
Tête interchangeable

Seite/page 21



**Micro Ausdrehkopf
Ø 0.3-19.1**

- DurchmesserEinstellung mit geringstem Umkehrspiel
- Zustellgenauigkeit von 0.002mm über Nonius im Durchmesser
- mit Innenkühlung

**Micro fine boring head
Ø 0.3-19.1**

- diametrical adjustment with maximal reduced reversal backlash
- 0.002mm diametrical adjustment by nonius
- with inner coolant supply

**Tête à aléser
Ø 0.3-19.1**

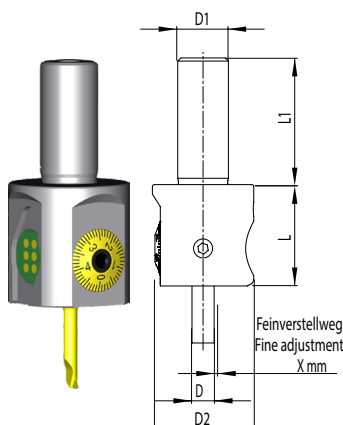
- ajustement du diamètre avec un jeu minimum
- Précision de livraison de 0.002mm sur vernier de diamètre
- avec refroidissement interne

Code/ Bestell-Nr. / Order number	D	D1	D2	X	L	L1
<i>ANALOG</i>						
SHX.A25.K01.025	4	8	25	1.5	25	20
SH1.A25.K01.025	4	10	25	1.5	25	25
SH1.A32.K01.032	7	10	32	2.5	32	40
SH2.A32.K01.032	7	16	32	2.5	32	40

**Micro Ausdrehkopf
DIGITAL Ø 0.3-19.1**

**Micro fine boring head
DIGITAL Ø 0.3-19.1**

**Tête à aléser
DIGITAL Ø 0.3-19.1**



- Einstellgenauigkeit 0.001mm im Durchmesser
- direktes Wegmeßsystem (kein Umkehrspiel)
- keine Batterie und Auswerteelektronik im Werkzeug verbaut
- sehr einfache Bedienung
- digital und analog einsetzbar

- 0.001 accuracy in diameter
- direct measurement system (no backlash)
- no battery and electronic evaluation unit inside the tool
- very easy operation
- for digital and analog use

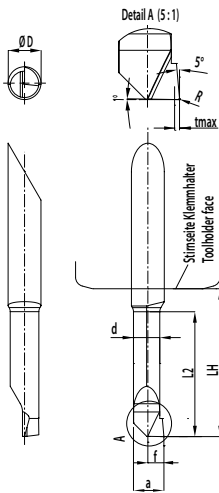
- Réglage de la précision 0,001 mm diamètre
- système de mesure de position directe (non pas de jeu)
- pas de batterie et sélecteur d'évaluation installé dans l'outil
- opération très facile
- utilisation numérique et analogique

Code/ Bestell-Nr. / Order number	D	D1	D2	X	L	L1
<i>DIGITAL</i>						
SH1.A25.DA2.025	4	10	25	1.5	25	25
SH2.A32.DA2.032	7	16	32	2.5	32	40

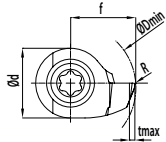
- Anzeigeeinheit muss separat bestellt werden (GH1.DA2.BG0.077).

- Display unit must be ordered separately (GH1.DA2.BG0.077).

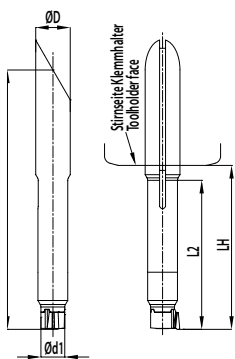
- L'unité d'affichage doit être commandée séparément (GH1.DA2.BG0.077).


Schneideinsätze
Boring bars
Barres d'alésage

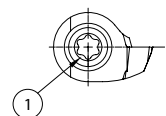
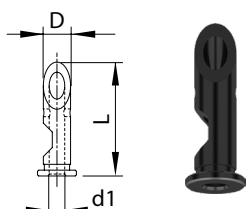
Code/ Bestell-Nr. / Order number	ØD	L2	Ød min	Ød max	R	a	d	f	LH	t max
255.004.003.013	4.0	1.2	0.3	0.7	-	0.25	0.15	0.15	11.0	0.03
255.004.006.013	4.0	2.5	0.6	1.1	-	0.55	0.46	0.30	11.0	0.05
255.004.010.013	4.0	4.0	1.0	2.3	0.05	0.95	0.65	0.50	11.0	0.1
255.004.022.013	4.0	6.0	2.2	3.3	0.05	2.00	1.55	1.10	11.0	0.2
255.004.032.013	4.0	10.2	3.2	4.3	0.05	3.00	2.55	1.60	11.0	0.2
255.004.039.018	4.0	15.2	3.9	(7.1)	0.05	3.70	3.45	1.95	16.0	0.3
255.007.052.023	7.0	20.3	5.2	6.3	0.05	5.00	4.25	2.60	21.0	0.5
255.007.062.023	7.0	20.3	6.2	7.3	0.05	6.00	5.25	3.10	21.0	0.5
255.007.069.028	7.0	25.4	6.9	12.1	0.20	6.70	6.25	3.45	26.0	0.5

Schneidplatten
Inserts
Inserts


Code/ Bestell-Nr. / Order number	Ød min	Ød max	R	f	Ød	tmax	Code
283.007.069.004	6.9	8.1	0.2	3.45	4.8	1.0	D07
283.007.079.004	7.9	9.1	0.2	3.95	4.8	1.0	D07
283.007.089.004	8.9	10.1	0.2	4.45	4.8	1.0	D07
283.010.099.004	9.9	12.1	0.2	4.95	7	1.0	D10
283.010.119.004	11.9	14.1	0.2	5.95	7	1.0	D10
283.010.139.004	13.9	19.1	0.2	6.95	7	1.0	D10


**Adapter
für Schneidplatten**
**Adapter
for inserts**
**Adapter
pour les inserts**

Code/ Bestell-Nr. / Order number	ØD h6	L2	Ø d1	L1	LH	Schraube/ screw	①	Torx	Code
282.007.007.033	7.0	30	4.8	56	31	M2x7.5 (900.254.020.007)		T7	D07
282.007.010.038	7.0	35	7.0	61	36	M3x9.0 (900.254.030.009)		T9	D10


Reduktionshülsen
Reduction sleeves
Réductions


Code/ Bestell-Nr. / Order number	D	d1	L
224.007.004.030	7	4	(30)

EX Spannzangenfutter

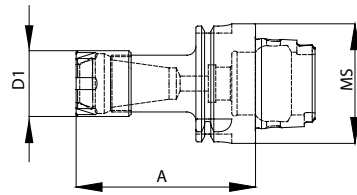
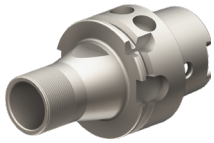
EX collet chuck

Porte-pince EX

- für Spannzangen nach DIN 6499 EX od. ESX, sowie ETS und ETA
- Grundkörper feingewuchtet
G 2.5/40'000 U/min

- for collets according to DIN 6499 EX / ESX and ETS / ETA
- fine balanced base tool
G 2.5/40'000 r/min

- pour pinces DIN 6499 EX / ESX and ETS / ETA
- outil équilibré G 2.5/40'000 r/min



Bestell-Nr. / Order number / Code	MS	für Spannzange / for collet / pour pince	Spannbereich / clamping range / plage de serrage	M	A	kg
T-20-00054 / HA4.E18.So1.060	HSK A40	ESX 16 / EX 16 / ETS 16.3	0.5–10	M20x1	60	0.25
T-20-00055 / HA4.E21.So1.060	HSK A40	ESX 20 / EX 20 / ETS 20.1	0.5–13	M24x1	60	0.27
T-20-00056 / HA4.E25.So1.055	HSK A40	ESX 25 / EX25 / ETS 25	0.5–16	M32x1.5	55	0.30
T-20-00062 / HE4.E18.So1.060	HSK E 40	ESX 16 / EX 16 / ETS 16.3	0.5–10	M20x1	60	0.25
T-20-00067 / HE4.E21.So1.060	HSK E 40	ESX 20 / EX 20 / ETS 20.1	0.5–13	M24x1	60	0.27
T-20-00063 / HE4.E25.So1.055	HSK E 40	ESX 25 / EX 25 / ETS 25	0.5–16	M32x1.5	55	0.30
PS4.E18.So1.060	PSC 40	ESX16 / EX 16 / ETS 16.3	0.5–10	M20x1	60	0.25
PS4.E21.So1.060	PSC 40	ESX 20 / EX 20/ ETS 20.1	0.5–13	M24x1	60	0.27
PS4.E25.So1.055	PSC 40	ESX 25 / EX 25 / ETS 25	0.5–16	M32x1.5	55	0.30

ESX Spannzange

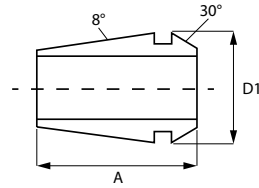
ESX Collet

Pince ESX

- Spannzangen nach DIN 6499-B
- Qualität Standard

- collets according to DIN 6499-B
- standard quality

- pince selon DIN 6499-B
- qualité standard



Bestell-Nr. / Order number / Code	Typ / Type	D1	Spannbereich / clam- ping range / plage de serrage	A
75-16300	ESX 16	17	1 - 10	27.5
75-20300	ESX 20	21	1 - 13	31.5
75-25300	ESX 25	26	1 - 16	34
75-32300	ESX 32	33	2.5 - 20	40
75-40300	ESX 40	41	3 - 26	46

EX Spannzange

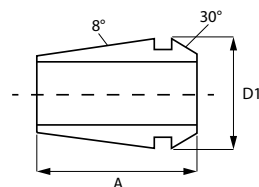
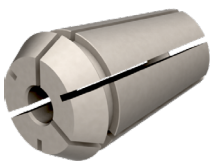
EX Collet

Pince EX

- Spannzangen nach DIN 6499-A
- Qualität UP (Ultra Precise)

- collets according to DIN 6499-A
- UP quality (Ultra Precise)

- pince selon DIN 6499-A
- qualité UP (Ultra Precise)



Bestell-Nr. / Order number / Code	Typ / Type	D1	D2	A
75-16200	EX 16	16.7	0.3 - 10	27.5
75-20200	EX 20	20.7	1 - 13	31.5
75-25200	EX 25	25.7	1 - 16	34
75-32200	EX 32	32.7	2 - 20	40
75-40200	EX 40	40.7	3 - 26	46

EX Spannzangenmutter

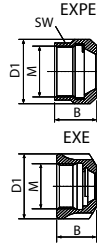
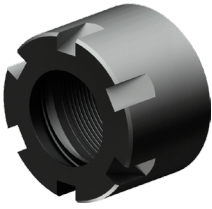
EX clamping nut

Ecrou EX

• gewuchtet

• balanced

• équilibrés



Bestell-Nr. / Order number / Code	Typ / Type	pour pince / für Spannzange / for collet	D1	M	L1
E18.ER1.001.018	EXPE 16	EX/ESX	25	M20x1	18
E21.ER1.001.019	EXPE 20	EX/ESX	30.5	M24x1	18.5
T-54-00035 / E25.ER1.001.021	EXE 25	EX/ESX	42	M32x1.5	20.5

Spannzangenmutter ETS

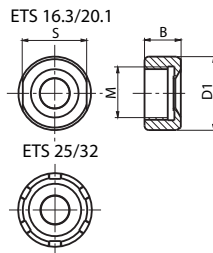
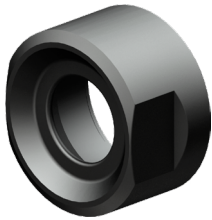
Clamping nut ETS

Ecrous ETS

• gewuchtet

• balanced

• équilibrés

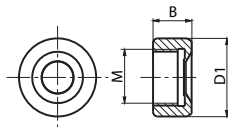
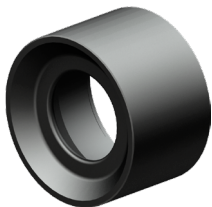


Bestell-Nr. / Order number / Code	Typ / Type	pour pince / für Spannzange / for collet	D1	M	L1
T-54-00007 / E18.ER1.001.015	ETS 16.3	ETS/ETA	26.7	M20x1	15
T-54-00008 / E21.ER1.001.017	ETS 20.1	ETS/ETA	32	M24x1	16.5
T-54-00009 / E25.ER1.001.019	ETS 25	ETS/ETA	42	M32x1.5	18.5

• glatt
• gewuchtet

• smooth
• balanced

• lisse
• équilibré



Bestell-Nr. / Order number / Code	Typ / Type	pour pince / für Spannzange / for collet	D1	M	B
T-54-00036 / E18.ER1.002.015	ETS 16.3	ETS/ETA	24.0	M20x1	15



Bestell-Nr. / Order number / Code	Typ / Type	pour pince / für Spannzange / for collet	D1	M	B
T-54-00036 / E18.ER1.002.015	ETS 16.3	ETS/ETA	24.0	M20x1	15

D Spannzangenfutter

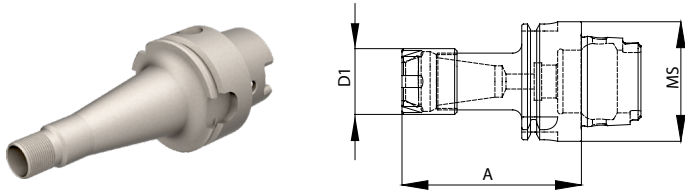
D collet chuck

Porte-pince D

- für Schaublin Spannzangen Typ D
- Grundkörper feingewuchtet
G 2.5/30'000 U/min

- for Schaublin collets type D
- fine balanced base tool
G 2.5/30'0000 r/min

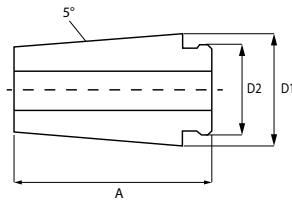
- pour pinces Schaublin type D
- outil équilibré G 2.5/30'000 r/min



Bestell-Nr. / Order number / Code	MS	für Spannzange / for collet / pour pince	Spannbereich / clamping range / plage de serrage	M	A	kg
87-40163	HSK A40	D8	0.5 – 5	M10x0.75	60	0.22
87-40164	HSK A40	D8	0.5 – 5	M10x0.75	75	0.25
87-40165	HSK A40	D8	0.5 – 5	M10x0.75	90	0.30
87-40166	HSK A40	D10	0.5 - 6	M12x0.75	60	0.22
87-40167	HSK A40	D10	0.5 - 6	M12x0.75	75	0.25
87-40168	HSK A40	D10	0.5 - 6	M12x0.75	90	0.30
87-40169	HSK A40	D16	0.5 - 10	M20x1	60	0.26
87-40170	HSK A40	D16	0.5 - 10	M20x1	75	0.31
87-40171	HSK A40	D20	0.5 - 12.7	M24x1	60	0.28
87-40002	HSK E 40	D8	0.5 – 5	M10x0.75	43	0.20
87-40012	HSK E 40	D8	0.5 – 5	M10x0.75	70	0.25
87-40004	HSK E 40	D12	0.5 – 7	M15x0.75	46	0.22
87-40030	HSK E 40	D12	0.5 – 7	M15x0.75	100	0.30
87-40016	HSK E 40	D16	0.5 - 10	M20x1	52	0.25
87-40031	HSK E 40	D16	0.5 - 10	M20x1	95	0.33
87-40007	HSK E 40	D20	0.5 - 12.7	M24x1	57	0.28
87-40028	HSK E 40	D24	0.5 - 16	M28x1	58	0.32

D Spannzange

- Schaublin Spannzangen
- Qualität UP (Ultra Precise)



D Collet

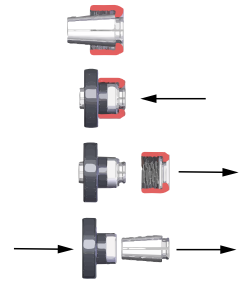
- Schaublin collet
- UP quality (Ultra Precise)

Pince D

- pince Schaublin
- qualité UP (Ultra Precise)

Zangenaustreiber /
Extractor / Extracteur

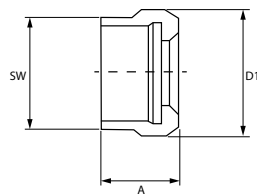
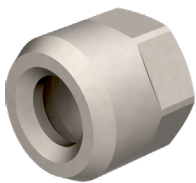
separat zu bestellen /
to be ordered separately /
à commander séparément



Bestell-Nr. / Order number / Code	Typ / Type	D1	D2	Spannbereich / clamping range / plage de serrage	A	Zangenaustreiber / Extractor / Extracteur
74-8000	D8	8.13	6.85	0.5 - 5	16.5	74-8902
74-10000	D10	10.14	8.25	0.5 - 6	20	74-10902
74-12000	D12	12.65	9.35	0.5 - 7	24	74-12902
74-16000	D16	16.65	12.9	0.5 - 10	28.5	74-16902
74-20000	D20	20.18	15.9	0.5 - 12.7	32	74-20902
74-24000	D24	24.18	19.4	0.5 - 16	35	74-24902

D Spannzangenmutter

- gewuchtet
- Beschichtung auf Anfrage



D Nut

- balanced
- coating on request

Ecrou D

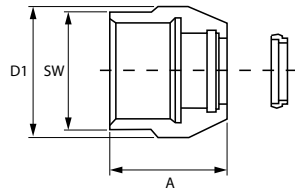
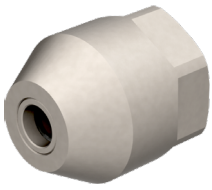
- équilibré
- revêtement sur demande

Bestell-Nr. / Order number / Code	Typ / Type	D1	M	SW	A
68-8700	D8	13.5	M10x0.75	12	12
68-10700	D10	15.7	M12x0.75	14	14
68-12700	D12	20	M15x0.75	18	16
68-16700	D16	27	M20x1	24	19
68-20700	D20	30.5	M24x1	27	19
68-24700	D24	36	M28x1	32	22

- gewuchtet
- Beschichtung auf Anfrage
- abgedichtete / spray

- balanced
- coating on request
- sealed / spray

- équilibré
- revêtement sur demande
- étanche / spray

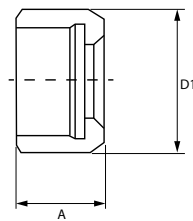


Bestell-Nr. / Order number / Code	Typ / Type	D1	M	SW	A	Dichtscheibe / Washer / Bague d'étanchéité	Spray ring / Bague spray
68-10790	D10	15.7	M12x0.75	14	20	68-10791	
68-12790	D12	20	M15x0.75	18	22	68-12791	
68-16790	D16	27	M20x1	24	25	68-16791	
68-20790	D20	30.5	M24x1	27	25	68-20791	
68-24790	D24	36	M28x1	32	28	68-24791	

- gewuchtet
- Beschichtung auf Anfrage
- glatt

- balanced
- coating on request
- smooth

- équilibré
- revêtement sur demande
- lisse



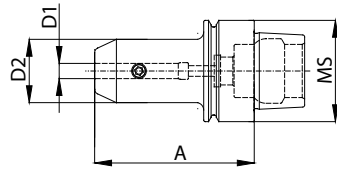
*separat zu bestellen /
to be ordered separately /
à commander séparément*

Bestell-Nr. / Order number / Code	Typ / Type	D1	M	A	Ringschlüssel / Mounting key / Clé de montage
68-8706	D8	14	M10x0.75	12	68-99089
68-10706	D10	16	M12x0.75	14	68-99090
68-10708	D10	14	M12x0.75	14	68-99089
68-12706	D12	20	M15x0.75	16	68-99092
68-16706	D16	25	M20x1	19	68-99094
68-20706	D20	30	M24x1	19	68-99095

- DIN 1835 B
- Aufnahme feingewuchtet
G 2.5/25 000 U/min

- DIN 1835 B
- fine balanced toolholders
G 2.5/25 000 r/min

- DIN 1835 B
- outil équilibré G 2.5/25000 r/min

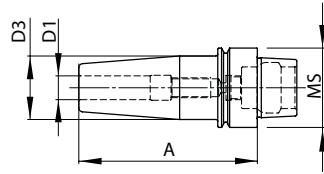


Bestell-Nr. / Order number/ Code	MS	D1	D2	A	kg
T-20-00023 / HA4.W06.K01.060	HSK A40	6	25	60	0.35
T-20-00059 / HA4.W08.K01.060	HSK A40	8	28	60	0.35
T-20-00060 / HA4.W10.K01.060	HSK A40	10	35	60	0.42
T-20-00030 / HA4.W12.K01.070	HSK A40	12	42	70	0.57
T-20-00032 / HA4.W14.K01.075	HSK A40	14	45	75	0.67
T-20-00031 / HA4.W16.K01.075	HSK A40	16	48	75	0.70
T-20-00061 / HA4.W20.K01.075	HSK A40	20	52	75	0.82
T-20-00076 / HE4.W06.K01.060	HSK E 40	6	25	60	0.35
T-20-00079 / HE4.W08.K01.060	HSK E 40	8	28	60	0.35
T-20-00044 / HE4.W10.K01.060	HSK E 40	10	35	60	0.42
T-20-00074 / HE4.W12.K01.070	HSK E 40	12	42	70	0.57
T-20-00107 / HE4.W14.K01.075	HSK E 40	14	45	75	0.67
T-20-00108 / HE4.W16.K01.075	HSK E 40	16	48	75	0.70
PS4.W06.K01.050	PSC 40	6	25	50	0.35
PS4.W08.K01.050	PSC 40	8	28	50	0.35
PS4.W10.K01.051	PSC 40	10	35	51	0.42
PS4.W12.K01.056	PSC 40	12	42	56	0.57
PS4.W14.K01.055	PSC 40	14	45	55	0.67
PS4.W16.K01.055	PSC 40	16	48	55	0.70

- Rundlaufgenauigkeit 3 µm
- Aufnahmen feingewuchtet
G 2.5/40000 U/min

- true running 3 µm
- fine balanced toolholders
G 2.5/40000 r/min

- Concentricité 3 µm
- outil équilibré G 2.5/40000 r/min

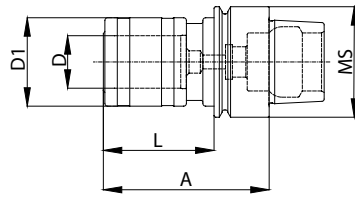


Bestell-Nr. / Order number/ Code	MS	D1	D2	A	kg
HA4.S03.K01.060	HSK A40	3	16	60	0.25
HA4.S04.K01.080	HSK A40	4	16	80	0.28
HA4.S04.K01.080	HSK A40	5	16	80	0.30
T-20-00114 / HA4.S06.K01.080	HSK A40	6	27	80	0.40
T-20-00086 / HA4.S08.K01.080	HSK A40	8	27	80	0.40
T-20-00115 / HA4.S10.K01.080	HSK A40	10	32	80	0.47
T-20-00116 / HA4.S12.K01.090	HSK A40	12	32	90	0.50
T-20-00117 / HA4.S14.K01.090	HSK A40	14	34	90	0.54
T-20-00118 / HA4.S16.K01.090	HSK A40	16	34	90	0.55
HE4.S03.K01.060	HSK E 40	3	16	60	0.25
HE4.S04.K01.070	HSK E 40	4	16	70	0.28
HE4.S05.K01.070	HSK E 40	5	16	70	0.30
T-20-00109 / HE4.S06.K01.080	HSK E 40	6	27	80	0.40
T-20-00085 / HE4.S08.K01.080	HSK E 40	8	27	80	0.40
T-20-00110 / HE4.S10.K01.080	HSK E 40	10	32	80	0.47
T-20-00111 / HE4.S12.K01.090	HSK E 40	12	32	90	0.50
T-20-00112 / HE4.S14.K01.090	HSK E 40	14	34	90	0.54
T-20-00113 / HE4.S16.K01.090	HSK E 40	16	34	90	0.55
PS4.S03.K01.060	PSC 40	3	16	60	0.25
PS4.S04.K01.060	PSC 40	4	16	60	0.28
PS4.S05.K01.060	PSC 40	5	16	60	0.30
PS4.S06.K01.075	PSC 40	6	27	75	0.40
PS4.S08.K01.075	PSC 40	8	27	75	0.40
PS4.S10.K01.075	PSC 40	10	31	75	0.47
PS4.S12.K01.075	PSC 40	12	31	75	0.50
PS4.S14.K01.080	PSC 40	14	34	80	0.54
PS4.S16.K01.080	PSC 40	16	34	80	0.55

- für Schnellwechseleinsätze «System Bilz»
- ohne Längenausgleich für Maschinen mit synchronisiertem Gewindeschneiden
- mit Innenkühlung

- for quick change adapter «System Bilz»
- without length-compensation for machines with synchronized tapping
- with inner coolant supply

- pour les inserts à changement rapide «Système Bilz»
- sans compensation de longueur pour les machines à filetage synchronisé
- avec refroidissement interne

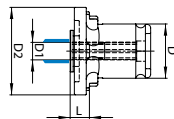
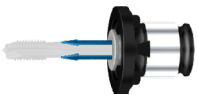


Bestell-Nr. / Order number/ Code	MS	M	D	D1	A	L	kg
HA4.Go1.K01.060	HSK A40	M3–M14	19	32	60	40	0.35
HA4.Go2.K01.100	HSK A40	M6–M24	31	50	100	80	0.45
HE4.Go1.K01.060	HSK E 40	M3–M14	19	32	60	40	0.35
HE4.Go2.K01.100	HSK E 40	M6–M24	31	50	100	80	0.45
PS4.Go1.K01.060	PSC 40	M3–M14	19	32	60	40	0.35

Schnellwechseleinsätze

Quick-change adapters

Adaptateur de taraudage



Code/ Bestell-Nr. / Order number	D	D1 Ø / □	D2	L
Go1.U03.K31.007	19	3.5 / 2.7	32	7
Go1.U04.K31.007	19	4.0 / 3.0	32	7
Go1.U05.K31.007	19	4.5 / 3.4	32	7
Go1.U06.K31.007	19	6.0 / 4.9	32	7
Go1.U07.K31.007	19	7.0 / 5.5	32	7
Go1.U08.K31.007	19	8.0 / 6.2	32	7
Go1.U09.K31.007	19	9.0 / 7.0	32	7
Go1.U10.K31.007	19	10.0 / 8.0	32	7
Go1.U11.K31.007	19	11.0 / 9.0	32	7
Go2.U06.K31.011	31	6.0 / 4.9	50	11
Go2.U07.K31.011	31	7.0 / 5.5	50	11
Go2.U08.K31.011	31	8.0 / 6.2	50	11
Go2.U09.K31.011	31	9.0 / 7.0	50	11
Go2.U10.K31.011	31	10.0 / 8.0	50	11
Go2.U11.K31.011	31	11.0 / 9.0	50	11
Go2.U12.K31.011	31	12.0 / 9.0	50	11
Go2.U14.K31.011	31	14.0 / 11.0	50	11
Go2.U16.K31.011	31	16.0 / 12.0	50	11
Go2.U18.K31.011	31	18.0 / 14.5	50	11

Fräsdorn

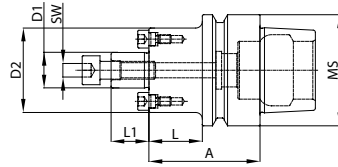
Milling arbor

Porte-fraise

- zur Aufnahme von Fräsern mit Quernut
- eingeschraubte Mitnehmerbolzen
- Aufnahmen feingewuchtet
G 2.5/18000 U/min

- to clamp milling cutters with cross drive
- screwed drive bolt
- fine balanced toolholders
G 2.5/18000 r/min

- pour maintenir des fraises avec une rainure transversale
- vissé dans la broche d'entraînement
- Les coups sont bien équilibrés
- G 2,5 / 18000 tr / min

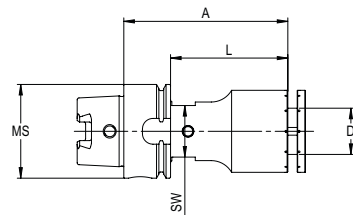


Bestell-Nr. / Order number/ Code	MS	D1	D2	SW	A	L	L1	kg
HE4.D16.001.050	HSK E 40	16	38	6	50	30	17	0.47
HE4.D22.001.050	HSK E 40	22	48	8	50	30	19	0.57
HE4.D27.001.065	HSK E 40	27	58	10	65	45	21	0.99
PS4.D16.001.035	PSC 40	16	38	6	35		17	0.4
PS4.D22.001.040	PSC 40	22	48	8	40		19	0.48

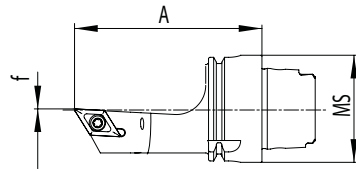
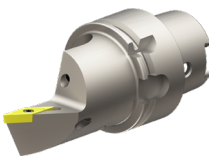
Sägeblattaufnahme




Sitting saw toolholder

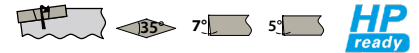
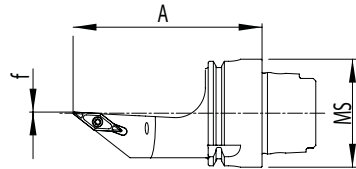
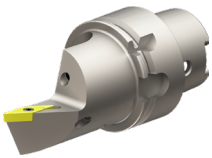
Tasseau scie circulaire






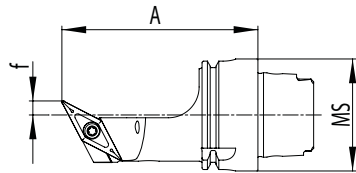
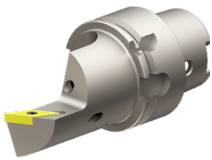
Bestell-Nr. / Order number/ Code	MS	D	A	L	SW	Remark	kg
T-20-00321 / HA4.10S.018.070	HSK A40	10	70	50	13	inner coolant supply	0.30
T-20-00320 / HA4.13S.022.070	HSK A40	13	70	50	18	inner coolant supply	0.33
T-20-00319 / HA4.16S.026.070	HSK A40	16	70	50	18	inner coolant supply	0.35
T-20-00318 / HA4.20S.035.070	HSK A40	20	70	50	22	inner coolant supply	0.47
T-20-00316 / HA4.22S.035.082	HSK A40	22	82	62	22	inner coolant supply	0.52
T-20-00317 / HA4.22S.035.105	HSK A40	22	105	85	22	inner coolant supply	0.55
T-20-00103 / HA4.S01.035.082	HSK A40	22	82	62	22		0.52
T-20-00219 / HA4.S01.034.105	HSK A40	22	105	85	22		0.58
T-20-00122 / HA4.S02.035.082	HSK A40	20	82	62	22		0.5
T-20-00104 / HE4.S01.035.082	HSK E 40	22	82	62	22		0.52
T-20-00243 / HE4.S01.034.105	HSK E 40	22	105	85	22		0.58
T-20-00357 / PS4.22S.035.082	PSC 40	22	82	62	22	inner coolant supply	0.52
T-20-00358 / PS4.22S.035.105	PSC 40	22	105	85	22	inner coolant supply	0.58
T-20-00197 / PS4.S02.035.070	PSC 40	20	70	50	22		0.52



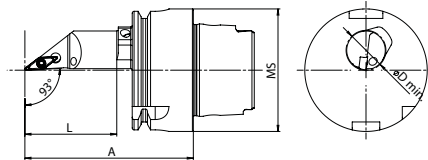
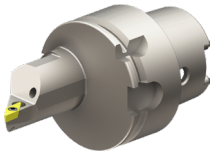
Bestell-Nr. / Order number/ Code	MS	f	A	Wendeplatte/ Insert/ Plaquette	kg			
T-20-00329 / HA4.KDB.(R/L)JA.070-F0	HSK A40	0	70	DC .. 11 T3 ..	0.35	WCB.ER1.001.000	WCB.ER2.001.009 (3.0 Nm)	
T-20-00065 / HA4.KDB.(R/L)JA.070	HSK A40	5	70	DC .. 11 T3 ..	0.35	WCB.ER1.001.000	WCB.ER2.001.009 (3.0 Nm)	
T-20-00245 / HT4.KDB.(R/L)JA.070	HSK T40	0	70	DC .. 11 T3 ..	0.35	WCB.ER1.001.000	WCB.ER2.001.009 (3.0 Nm)	
PS4.KDB.(R/L)JA.070-F0	PSC40	0	70	DC .. 11 T3 ..	0.35	WCB.ER1.001.000	WCB.ER2.001.009 (3.0 Nm)	
PS4.KDB.(R/L)JA.070	PSC40	5	70	DC .. 11 T3 ..	0.35	WCB.ER1.001.000	WCB.ER2.001.009 (3.0 Nm)	
HW4.KDB.(R/L)JA.070-F0	HSK E40 (WM)	0	70	DC .. 11 T3 ..	0.35	WCB.ER1.001.000	WCB.ER2.001.009 (3.0 Nm)	
HW4.KDB.(R/L)JA.070	HSK E40 (WM)	5	70	DC .. 11 T3 ..	0.35	WCB.ER1.001.000	WCB.ER2.001.009 (3.0 Nm)	



Bestell-Nr. / Order number/ Code	MS	f	A	Wendeplatte/ Insert/ Plaquette	kg			
T-20-00330 / HA4.KVA.(R/L)JA.070-F0	HSK A40	0	70	VC .. 11 T3 ..	0.35	WCA.ER1.001.000	WCA.ER2.001.006 (0.9 Nm)	
T-20-00331 / HA4.KVE.(R/L)JA.070-F0	HSK A40	0	70	VB .. 11 03 ..	0.35	WCA.ER1.001.000	WCA.ER2.001.006 (0.9 Nm)	
T-20-00098 / HA4.KVA.(R/L)JA.070	HSK A40	5	70	VC .. 11 T3 ..	0.35	WCA.ER1.001.000	WCA.ER2.001.006 (0.9 Nm)	
T-20-00246 / HT4.KVA.(R/L)JA.070	HSK T40	0	70	VC .. 11 T3 ..	0.35	WCA.ER1.001.000	WCA.ER2.001.006 (0.9 Nm)	
PS4.KVA.(R/L)JA.070-F0	PSC40	0	70	VC .. 11 T3 ..	0.35	WCA.ER1.001.000	WCA.ER2.001.006 (0.9 Nm)	
PS4.KVE.(R/L)JA.070-F0	PSC40	0	70	VB .. 11 03 ..	0.35	WCA.ER1.001.000	WCA.ER2.001.006 (0.9 Nm)	
HW4.KVA.(R/L)JA.070-F0	HSK E40 (WM)	0	70	VC .. 11 T3 ..	0.35	WCA.ER1.001.000	WCA.ER2.001.006 (0.9 Nm)	
HW4.KVE.(R/L)JA.070-F0	HSK E40 (WM)	0	70	VB .. 11 03 ..	0.35	WCA.ER1.001.000	WCA.ER2.001.006 (0.9 Nm)	



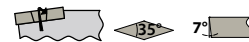
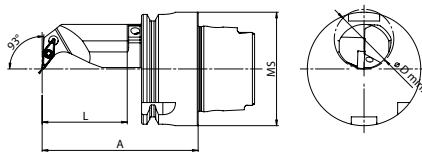
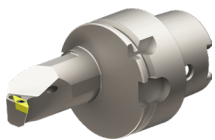
Bestell-Nr. / Order number/ Code	MS	f	A	Wendeplatte/ Insert/ Plaquette	kg			
HA4.KVE.(R/L)PA.070-F0	HSK A40	0	70	VB .. 11 03 ..	0.35	WCA.ER1.001.000	WCA.ER2.001.006 (0.9 Nm)	
T-20-00119 / HA4.KVB.(R/L)PA.070	HSK A40	5	70	VC .. 16 04 ..	0.35	WCB.ER1.001.000	WCB.ER2.001.009 (3.0 Nm)	
PS4.KVE.(R/L)PA.070-F0	PSC40	0	70	VB .. 11 03 ..	0.35	WCA.ER1.001.000	WCA.ER2.001.006 (0.9 Nm)	





Bestell-Nr. / Order number/ Code	MS	f	A	ØDmin	L	Wendeplatte/ Insert/ Plaquette	kg		
HA4.KVI.(R/L)JA.055-F0	HSK A40	0	55	13	30	VC .. 07 02 ..	0.25	WCA.ER1.001.000	WVX-ER1.003.005 (0.9 Nm)
HA4.KVI.(R/L)JB.055-F0	HSK A40	0	55	21	30	VC .. 07 02 ..	0.25	WCA.ER1.001.000	WVX-ER1.003.005 (0.9 Nm)
PS4.KVI.(R/L)JA.050-F0	PSC 40	0	50	13	30	VC .. 07 02 ..	0.25	WCA.ER1.001.000	WVX-ER1.003.005 (0.9 Nm)
PS4.KVI.(R/L)JB.050-F0	PSC 40	0	50	22	30	VC .. 07 02 ..	0.25	WCA.ER1.001.000	WVX-ER1.003.005 (0.9 Nm)
HW4.KVI.(R/L)JA.055-F0	HSK E40 (WM)	0	55	13	30	VC .. 07 02 ..	0.25	WCA.ER1.001.000	WVX-ER1.003.005 (0.9 Nm)
HW4.KVI.(R/L)JB.055-F0	HSK E40	0	55	21	30	VC .. 07 02 ..	0.25	WCA.ER1.001.000	WVX-ER1.003.005 (0.9 Nm)

SVUC R/L

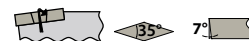
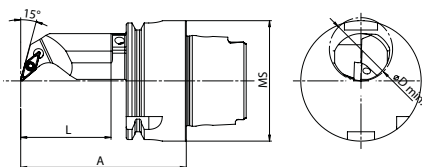
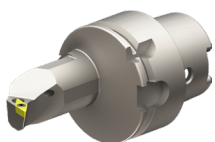
93°/35°

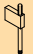



Bestell-Nr. / Order number/ Code	MS	f	A	ØDmin	L	Wendeplatte/ Insert/ Plaquette	kg		
HA4.KVI.(R/L)UB.055-F0	HSK A40	0	55	21	30	VC..07 02..	0.25	WCA.ER1.001.000	WVX-ER1.003.005 (0.9 Nm)
PS4.KVI.(R/L)UB.050-F0	PSC 40	0	50	21	30	VC..07 02..	0.25	WCA.ER1.001.000	WVX-ER1.003.005 (0.9 Nm)

SVQC R/L

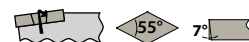
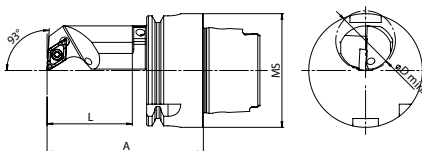
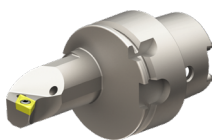
105°/35°

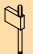



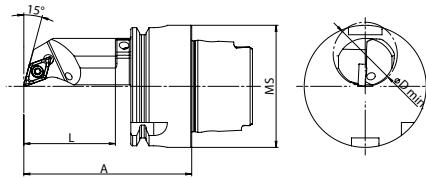
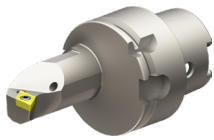
Bestell-Nr. / Order number/ Code	MS	f	A	ØDmin	L	Wendeplatte/ Insert/ Plaquette	kg		
HA4.KVI.(R/L)QB.055-F0	HSK A40	0	55	21	30	VC..07 02..	0.25	WCA.ER1.001.000	WVX-ER1.003.005 (0.9 Nm)
PS4.KVI.(R/L)QB.050-F0	PSC 40	0	50	21	30	VC..07 02..	0.25	WCA.ER1.001.000	WVX-ER1.003.005 (0.9 Nm)



SDUC R/L

93°/55°



Bestell-Nr. / Order number/ Code	MS	f	A	ØDmin	L	Wendeplatte/ Insert/ Plaquette	kg		
HA4.KDA.(R/L)UB.055-F0	HSK A40	0	55	21	30	DC..07 02..	0.25	WCA.ER1.001.000	WVX-ER1.003.005 (0.9 Nm)
PS4.KDA.(R/L)UB.050-F0	PSC 40	0	50	21	30	DC..07 02..	0.25	WCA.ER1.001.000	WVX-ER1.003.005 (0.9 Nm)

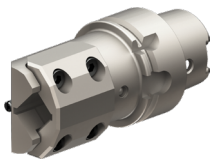


Bestell-Nr. / Order number/ Code	MS	f	A	ØDmin	L	Wendeplatte/ Insert/ Plaquette	kg		
HA4.KDA.(R/L)QB.055-F0	HSK A40	0	55	21	30	DC..07 02..	0.25	WCA.ER1.001.000	WVX-ER1.003.005 (0.9 Nm)
PS4.KDA.(R/L)QB.050-F0	PSC 40	0	50	21	30	DC..07 02..	0.25	WCA.ER1.001.000	WVX-ER1.003.005 (0.9 Nm)

Werkzeughalter axial

Tool holder axial

Porte-outils axial

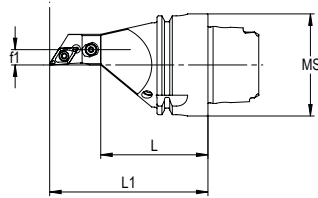
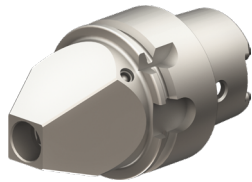


Bestell-Nr. / Order number/ Code	MS	Carré/ Vier- kant/ Square	A	L	SW	kg
T-20-00135 / HA4.V1X.N40.070	HSK A40	10 / 12	70	50	10/12	0.45
T-20-00151 / HA4.V1X.N4T.070	HSK T40	10 / 12	70	40	10/12	0.45
T-20-00136 / PS4.V1X.N40.060	PSC40	10 / 12	60	50	10/12	0.45
HA4.V1X.N4T.070	HSK E40 (WM)	10 / 12	70	50	10 / 12	0.45

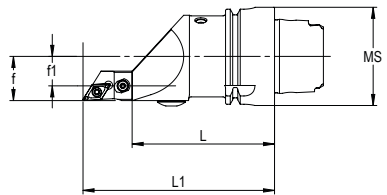
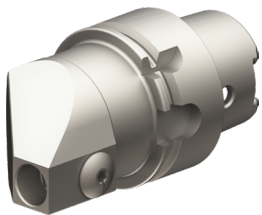
- für effiziente Drehbearbeitung
- mit Innenkühlung
- Benutzung eines Drehmomentschlüssels empfohlen

- to turn efficiently
- with inner coolant supply
- Recommended use of dynamometric key

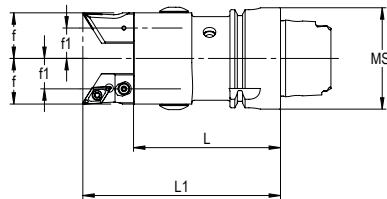
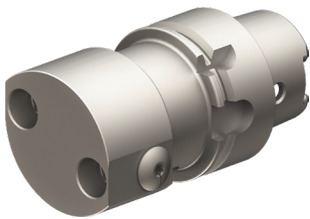
- pour un tournage efficace
- avec arrosage interne
- Utilisation clé dynamométrique recommandée



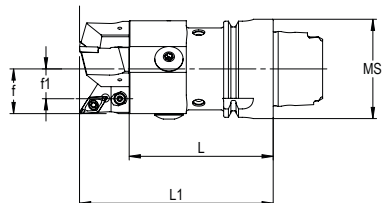
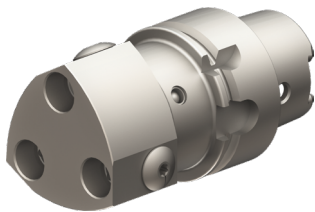
(1)



(2)




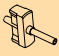

(3)



(4)



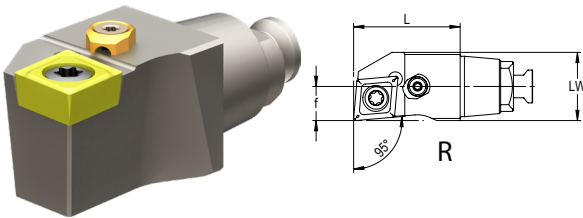
STATIONARY TOOLHOLDERS





Bestell.Nr. / Order number/ Code	MS	f1	f	L	kg				Abbildung / Figure
HA4.LW3.RF0.042	HSK T40	6	0	42	0.29	LW3.ER1.012.014 (3.8 Nm)	J00.895.000.038	J00.895.002.015 (TX15)	1
HA4.LW3.R11.058	HSK T40	12	18	58	0.38	LW3.ER1.012.014 (3.8 Nm)	J00.895.000.038	J00.895.002.015 (TX15)	2
HA4.LW3.R21.058	HSK T40	12	18	58	0.45	LW3.ER1.012.014 (3.8 Nm)	J00.895.000.038	J00.895.002.015 (TX15)	3
HA4.LW3.R31.058	HSK T40	12	18	58	0.44	LW3.ER1.012.014 (3.8 Nm)	J00.895.000.038	J00.895.002.015 (TX15)	4
HA4.LW3.RF0.042-Bum*	HSK A40	6	0	42	0.29	LW3.ER1.012.014 (3.8 Nm)	J00.895.000.038	J00.895.002.015 (TX15)	1
HA4.LW3.R11.058-Bum*	HSK A40	12	18	58	0.38	LW3.ER1.012.014 (3.8 Nm)	J00.895.000.038	J00.895.002.015 (TX15)	2
HA4.LW3.R21.058-Bum*	HSK A40	12	18	58	0.45	LW3.ER1.012.014 (3.8 Nm)	J00.895.000.038	J00.895.002.015 (TX15)	3
HA4.LW3.R31.058-Bum*	HSK A40	12	18	58	0.44	LW3.ER1.012.014 (3.8 Nm)	J00.895.000.038	J00.895.002.015 (TX15)	4

PS4.LW3.RF0.042	PSC 40	6	0	42	0.38	LW3.ER1.012.014 (3.8 Nm)	J00.895.000.038	J00.895.002.015 (TX15)	1
PS4.LW3.R11.042	PSC 40	15	21	42	0.36	LW3.ER1.012.014 (3.8 Nm)	J00.895.000.038	J00.895.002.015 (TX15)	2
PS4.LW3.R21.042	PSC 40	15	21	42	0.45	LW3.ER1.012.014 (3.8 Nm)	J00.895.000.038	J00.895.002.015 (TX15)	3
PS4.LW3.R31.042	PSC 40	15	21	42	0.46	LW3.ER1.012.014 (3.8 Nm)	J00.895.000.038	J00.895.002.015 (TX15)	4
HW4.LW3.RF0.042	HSK E40 (WM)	6	0	42	0.29	LW3.ER1.012.014 (3.8 Nm)	J00.895.000.038	J00.895.002.015 (TX15)	1
HW4.LW3.R11.058	HSK E40 (WM)	12	18	58	0.38	LW3.ER1.012.014 (3.8 Nm)	J00.895.000.038	J00.895.002.015 (TX15)	2
HW4.LW3.R21.058	HSK E40 (WM)	12	18	58	0.45	LW3.ER1.012.014 (3.8 Nm)	J00.895.000.038	J00.895.002.015 (TX15)	3
HW4.LW3.R31.058	HSK E40 (WM)	12	18	58	0.44	LW3.ER1.012.014 (3.8 Nm)	J00.895.000.038	J00.895.002.015 (TX15)	4

SCLC R/L

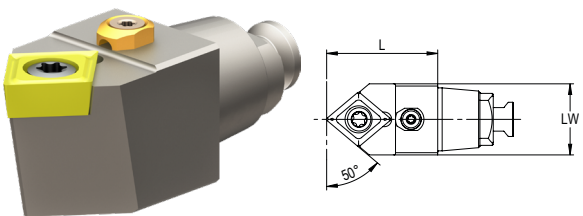
95°/80°







Bestell.Nr. / Order number/ Code	LW	f	L	Wendeplatte/ Insert/ Plaque	kg				
LW3.SCLC(R/L).0620.06	3	6	20	ISO - CC...06 02 .. ANSI - CC...21.5 ..	0.03	WCA.ER1.001.000	WCA.ER2.001.006 (0.9 Nm)	LWX.ER1.007.002	LW3.U00.ER1.000
LW3.SCLC(R/L).0620.09	3	6	20	ISO - CC...09 T3 .. ANSI - CC...32.5 ..	0.03	WCB.ER1.001.000	WCB.ER2.001.009 (3.0 Nm)	LWX.ER1.007.002	LW3.U00.ER1.000

SCMC N

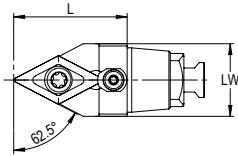
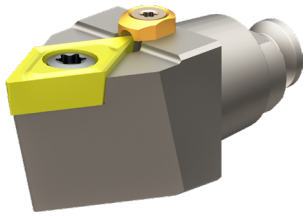
50°/80°/50°







Bestell.Nr. / Order number/ Code	LW	f	L	Wendeplatte/ Insert/ Plaque	kg				
LW3.SCMCN.0020.06	3	0	20	ISO - CC...06 02 .. ANSI - CC...21.5 ..	0.03	WCA.ER1.001.000	WCA.ER2.001.006 (0.9 Nm)	LWX.ER1.007.002	LW3.U00.ER1.000
LW3.SCMCN.0020.09	3	0	20	ISO - CC...09 T3 .. ANSI - CC...32.5 ..	0.03	WCB.ER1.001.000	WCB.ER2.001.009 (3.0 Nm)	LWX.ER1.007.002	LW3.U00.ER1.000

SDNC N

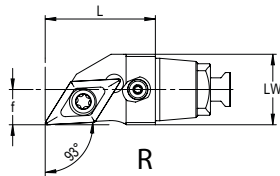
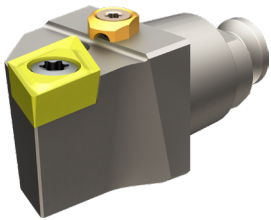
50°/80°/50°







Bestell.Nr. / Order number/ Code	LW	f	L	Wendeplatte/ Insert/ Plaquette	kg				
LW3.SDNCN.0020.07	3	0	20	ISO - DC .. 07 02 .. ANSI - DC .. 21.5 ..	0.03	WCA.ER1.001.000	WCA.ER2.001.006 (0.9 Nm)	LWX.ER1.007.002	LW3.U00.ER1.000
LW3.SDNCN.0025.11	3	0	25	ISO - DC .. 11 T3 .. ANSI - DC .. 32.5 ..	0.03	WCB.ER1.001.000	WCB.ER2.001.009 (3.0 Nm)	LWX.ER1.007.002	LW3.U00.ER1.000

SDJC R/L

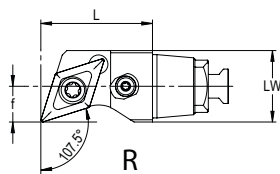
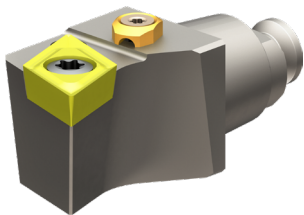
93°/55°

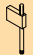





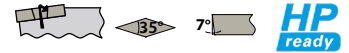
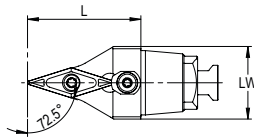
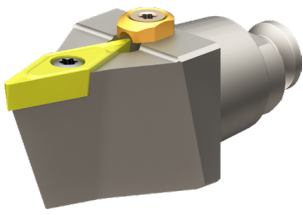
Bestell.Nr. / Order number/ Code	LW	f	L	Wendeplatte/ Insert/ Plaquette	kg				
LW3.SDJC(R/L).0620.07	3	6	20	ISO - DC .. 07 02 .. ANSI - DC .. 21.5 ..	0.03	WCA.ER1.001.000	WCA.ER2.001.006 (0.9 Nm)	LWX.ER1.007.002	LW3.U00.ER1.000
LW3.SDJC(R/L).0625.11	3	6	25	ISO - DC .. 11 T3 .. ANSI - DC .. 32.5 ..	0.03	WCB.ER1.001.000	WCB.ER2.001.009 (3.0 Nm)	LWX.ER1.007.002	LW3.U00.ER1.000





SDHC R/L

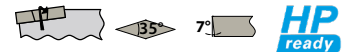
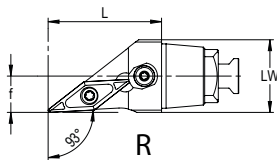
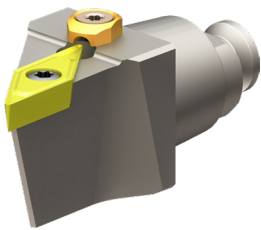
107.5°/55°







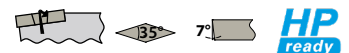
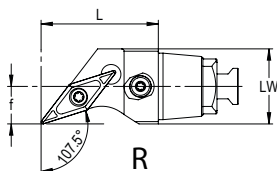
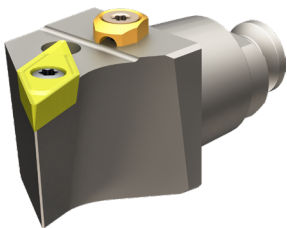
Bestell.Nr. / Order number/ Code	LW	f	L	Wendeplatte/ Insert/ Plaquette	kg				
LW3.SDHC(R/L).0620.07	3	6	20	ISO - DC .. 07 02 .. ANSI - DC .. 21.5 ..	0.03	WCA.ER1.001.000	WCA.ER2.001.006 (0.9 Nm)	LWX.ER1.007.002	LW3.U00.ER1.000
LW3.SDHC(R/L).0625.11	3	6	25	ISO - DC .. 11 T3 .. ANSI - DC .. 32.5 ..	0.03	WCB.ER1.001.000	WCB.ER2.001.009 (3.0 Nm)	LWX.ER1.007.002	LW3.U00.ER1.000







Bestell.Nr. / Order number/ Code	LW	f	L	Wendeplatte/ Insert/ Plaquette	kg				
LW3.SVVCN.0025.11	3	0	25	ISO - VC .. 11 03 .. ANSI - VC .. 22 ..	0.03	WCA.ER1.001.000	WCA.ER2.001.006 (0.9 Nm)	LWX.ER1.007.002	LW3.U00.ER1.000
LW3.SVVCN.0030.13	3	0	30	ISO - VC .. 13 03 .. ANSI - VC .. 2.52 ..	0.03	WCA.ER1.001.000	WCA.ER2.001.007 (0.9 Nm)	LWX.ER1.007.002	LW3.U00.ER1.000



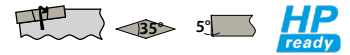
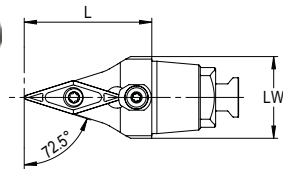
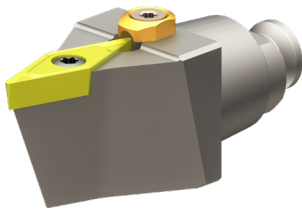
Bestell.Nr. / Order number/ Code	LW	f	L	Wendeplatte/ Insert/ Plaquette	kg				
LW3.SVJC(R/L).0625.11	3	6	25	ISO - VC .. 11 03 .. ANSI - VC .. 22 ..	0.03	WCA.ER1.001.000	WCA.ER2.001.006 (0.9 Nm)	LWX.ER1.007.002	LW3.U00.ER1.000
LW3.SVJC(R/L).0630.13	3	6	30	ISO - VC .. 13 03 .. ANSI - VC .. 2.52 ..	0.03	WCA.ER1.001.000	WCA.ER2.001.007 (0.9 Nm)	LWX.ER1.007.002	LW3.U00.ER1.000







Bestell.Nr. / Order number/ Code	LW	f	L	Wendeplatte/ Insert/ Plaquette	kg				
LW3.SVHC(R/L).0625.11	3	6	25	ISO - VC .. 11 03 .. ANSI - VC .. 22 ..	0.03	WCA.ER1.001.000	WCA.ER2.001.006 (0.9 Nm)	LWX.ER1.007.002	LW3.U00.ER1.000

SVVB N

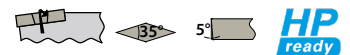
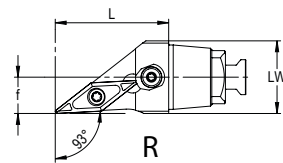
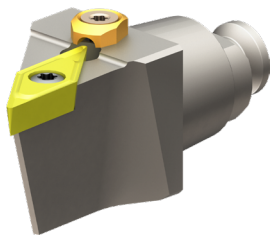
72.5°/35°

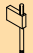





Bestell.Nr. / Order number/ Code	LW	f	L	Wendepatte/ Insert/ Plaquette	kg				
LW3.SVVB.N.0025.11	3	0	25	ISO - VB .. 11 03 .. ANSI - VB .. 22 ..	0.03	WCA.ER1.001.000	WCA.ER2.001.006 (0.9 Nm)	LWX.ER1.007.002	LW3.U00.ER1.000

SVJB R/L

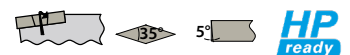
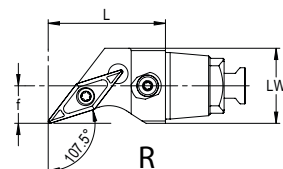
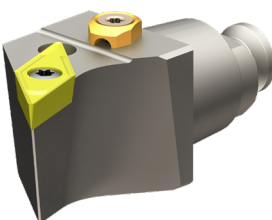
93°/35°

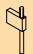





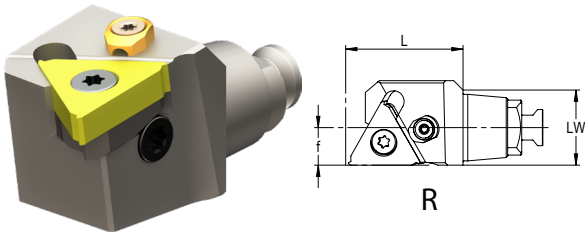
Bestell.Nr. / Order number/ Code	LW	f	L	Wendepatte/ Insert/ Plaquette	kg				
LW3.SVJB(R/L).0625.11	3	6	25	ISO - VB .. 11 03 .. ANSI - VB .. 22 ..	0.03	WCA.ER1.001.000	WCA.ER2.001.006 (0.9 Nm)	LWX.ER1.007.002	LW3.U00.ER1.000






SVHB R/L

107.5°/35°



Bestell.Nr. / Order number/ Code	LW	f	L	Wendepatte/ Insert/ Plaquette	kg				
LW3.SVHB(R/L).0625.11	3	6	25	ISO - VB .. 11 03 .. ANSI - VB .. 22 ..	0.03	WCA.ER1.001.000	WCA.ER2.001.006 (0.9 Nm)	LWX.ER1.007.002	LW3.U00.ER1.000

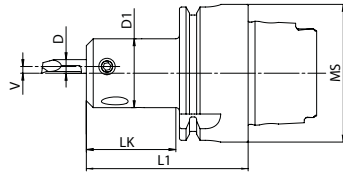
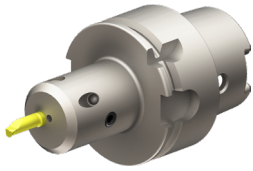


Bestell.Nr. / Order number/ Code	LW	f	L	Wendeplatte/ Insert/ Plaquette	kg					
LW3.SER.0625.16	3	6	25	16 ER	0.04	WGB.ER1.001.000	WGB.ER2.001.012 (2.0 Nm)	WGB.ER2.102.003	WGB.ER3.001.007 (2.0 Nm)	LWX.ER1.007.002
LW3.SEL.0625.16	3	6	25	16 EL	0.04	WGB.ER1.001.000	WGB.ER2.001.012 (2.0 Nm)	WGB.ER2.101.003	WGB.ER3.001.007 (2.0 Nm)	LWX.ER1.007.002

Center Line
Bohrstangenhalter

Center Line
Boring bar holder

Center Line
Porte-outils indexé

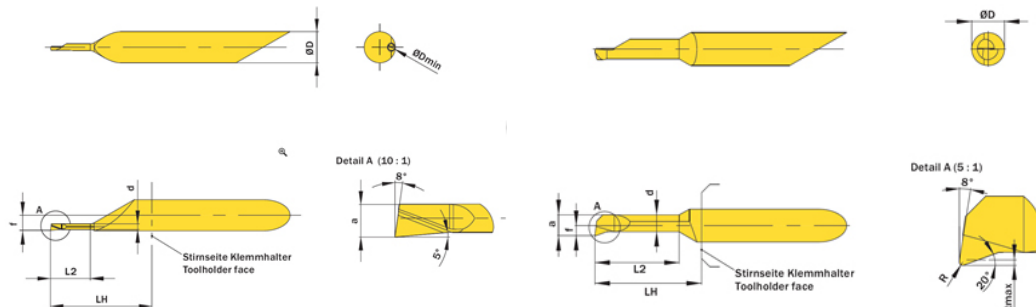


Bestell-Nr. / Order number / Code	MS	D1	D	L1	LK	V	kg
HA4.C04.K01.047-F0	HSK A40	20	4	47	26	1.95	0.40
PS4.C04.K01.047-F0	PSC 40	20	4	47	26	1.95	0.40
HW4.C04.K01.047-F0	HSK E40 (WM)	20	4	47	26	1.95	0.40

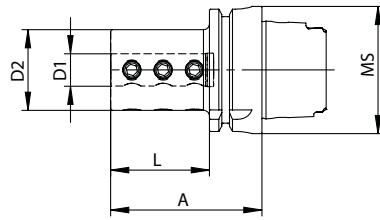
Center Line
Schneideinsätze


Center Line
Boring bars

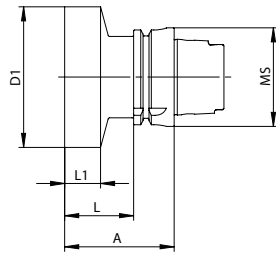
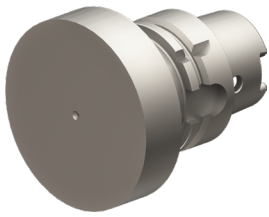
Center Line
Barres d'alésage



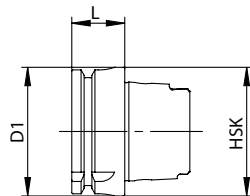
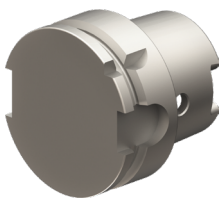
Code/ Bestell-Nr. / Order number	ØD	L2	Ød min	R	a	d	f	LH	tmax
255.C04.003.013	4.0	1.2	0.3	-	0.25	0.19	1.95	13.0	-
255.C04.006.013	4.0	2.5	0.6	-	0.55	0.46	1.95	13.0	-
255.C04.010.013	4.0	4.0	1.0	0.05	0.95	0.65	1.95	13.0	0.1
255.C04.017.013	4.0	6.0	1.7	0.05	1.45	1.05	1.95	13.0	0.15
255.C04.022.013	4.0	6.0	2.2	0.05	2.45	2.05	1.95	13.0	0.2
255.C04.027.013	4.0	10.2	2.7	0.05	2.95	2.55	1.95	13.0	0.2
255.C04.032.013	4.0	10.2	3.2	0.05	2.95	2.55	1.95	13.0	0.2
255.C04.037.013	4.0	10.2	3.7	0.15	3.45	3.05	1.95	13.0	0.2
255.C04.042.013	4.0	10.2	4.2	0.05	3.95	3.45	1.95	13.0	0.3



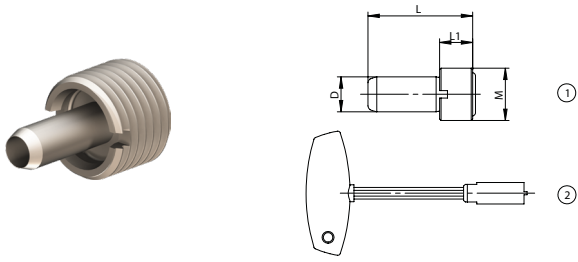
Bestell-Nr. / Order number/ Code	MS	D1	D2	A	L	kg	
HA4.B06.K01.055-Bum	HSK A40	6	34	55	35	0.4	ERU.G54.001.010 (5.0 Nm) M 6 x 10
HA4.B08.K01.055-Bum	HSK A40	8	34	55	35	0.38	ERU.G55.001.010 (10.0 Nm) M 8 x 10
HA4.B10.K01.055-Bum	HSK A40	10	34	55	35	0.37	ERU.G55.001.010 (10.0 Nm) M 8 x 10
HA4.B12.K01.055-Bum	HSK A40	12	36	55	35	0.36	ERU.G55.001.010 (10.0 Nm) M 8 x 10
HA4.B16.K01.070-Bum	HSK A40	16	40	70	50	0.4	ERU.G56.001.012 (15.0 Nm) M10 x 12
HA4.B20.K01.085-Bum	HSK A40	20	44	85	65	0.71	ERU.G56.001.012 (15.0 Nm) M10 x 12
HA4.B06.K01.055	HSK T40	6	34	55	35	0.4	ERU.G54.001.010 (5.0 Nm) M 6 x 10
HA4.B08.K01.055	HSK T40	8	34	55	35	0.38	ERU.G55.001.010 (10.0 Nm) M 8 x 10
HA4.B10.K01.055	HSK T40	10	34	55	35	0.37	ERU.G55.001.010 (10.0 Nm) M 8 x 10
HA4.B12.K01.055	HSK T40	12	36	55	35	0.36	ERU.G55.001.010 (10.0 Nm) M 8 x 10
HA4.B16.K01.070	HSK T40	16	40	70	50	0.4	ERU.G56.001.012 (15.0 Nm) M10 x 12
HA4.B20.K01.085	HSK T40	20	44	85	65	0.71	ERU.G56.001.012 (15.0 Nm) M10 x 12
PS4.B06.K01.065	PSC40	6	34	65	43	0.54	ERU.G54.001.010 (5.0 Nm) M 6 x 10
PS4.B08.K01.065	PSC40	8	34	65	43	0.51	ERU.G55.001.010 (10.0 Nm) M 8 x 10
PS4.B10.K01.065	PSC40	10	34	65	43	0.50	ERU.G55.001.010 (10.0 Nm) M 8 x 10
PS4.B12.K01.065	PSC40	12	36	65	43	0.00	ERU.G55.001.010 (10.0 Nm) M 8 x 10
PS4.B16.K01.065	PSC40	16	40	65	43	0.56	ERU.G56.001.012 (15.0 Nm) M10 x 12
PS4.B20.K01.065	PSC40	20	44	65	-	0.59	ERU.G56.001.012 (15.0 Nm) M10 x 12
PS4.B25.K01.065	PSC40	25	44	65	-	0.52	ERU.G56.001.012 (15.0 Nm) M10 x 12
HW4.B06.K01.055	HSK E40 (WM)	6	34	55	35	0.4	
HW4.B08.K01.055	HSK E40 (WM)	8	34	55	35	0.38	
HW4.B10.K01.055	HSK E40 (WM)	10	34	55	35	0.37	
HW4.B12.K01.055	HSK E40 (WM)	12	36	55	35	0.36	
HW4.B16.K01.070	HSK E40 (WM)	16	40	70	50	0.4	
HW4.B20.K01.085	HSK E40 (WM)	20	44	85	65	0.7	



Bestell-Nr. / Order number/ Code	MS	D1	A	L	kg
T-20-00064 / HA4.Ro4.001.100	A 40	33	100	80	0.93
HA4.Ro4.001.055	T 40	54	55	35	0.70
HA4.Ro4.002.065	T 40	64	65	45	1.05
HA4.Ro5.001.080	T 40	33	80	60	0.59
T-20-00127 / HA4.Ro4.002.100	T 40	33	100	80	0.93
HW4.Ro6.055.065	HSK E40 (WM)	55	65	45	0.87
HW4.Ro3.034.076	HSK E40 (WM)	34	76	56	0.58
HW4.Ro7.070.076	HSK E40 (WM)	70	76	56	1.84
HW4.Ro8.085.100	HSK E40 (WM)	85	100	80	3.05
HW4.Ro4.001.120	HSK E40 (WM)	43	120	100	1.27



Bestell-Nr. / Order number/ Code	HSK	D1	L	kg
HA4.000.001.020	40	40	20	0.19



Bestell-Nr. / Order number/ Code	HSK	M	Typ
HA4.ER4.001.030	40	12x1	1
HA4.ER4.002.115	40		2

RBC
BEARINGS **SCHAUBLIN**

Schaublin SA
Rue de la Blancherie 9
CH-2800 Delémont
Phone +41 32 421 13 00
Fax +41 32 421 13 02
www.schaublin.ch

SWISS  **TOOLS**[®]

Swiss Tool Systems AG
Wydenstrasse 28
CH-8575 Bürglen
Phone +41 71 634 85 20
Fax +41 71 634 85 29
www.swisstools.org